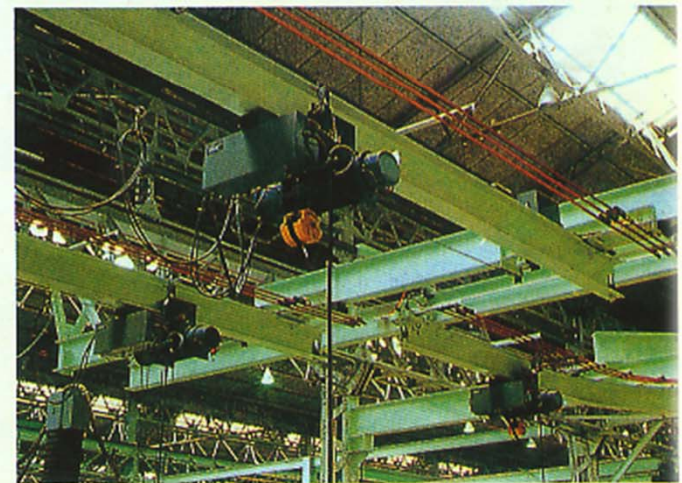
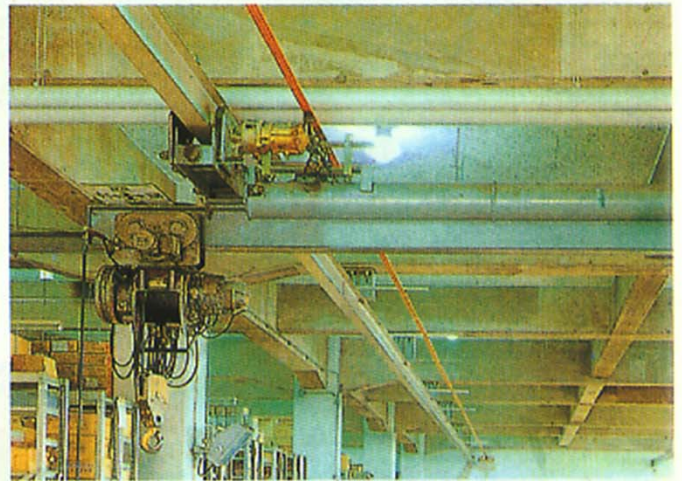
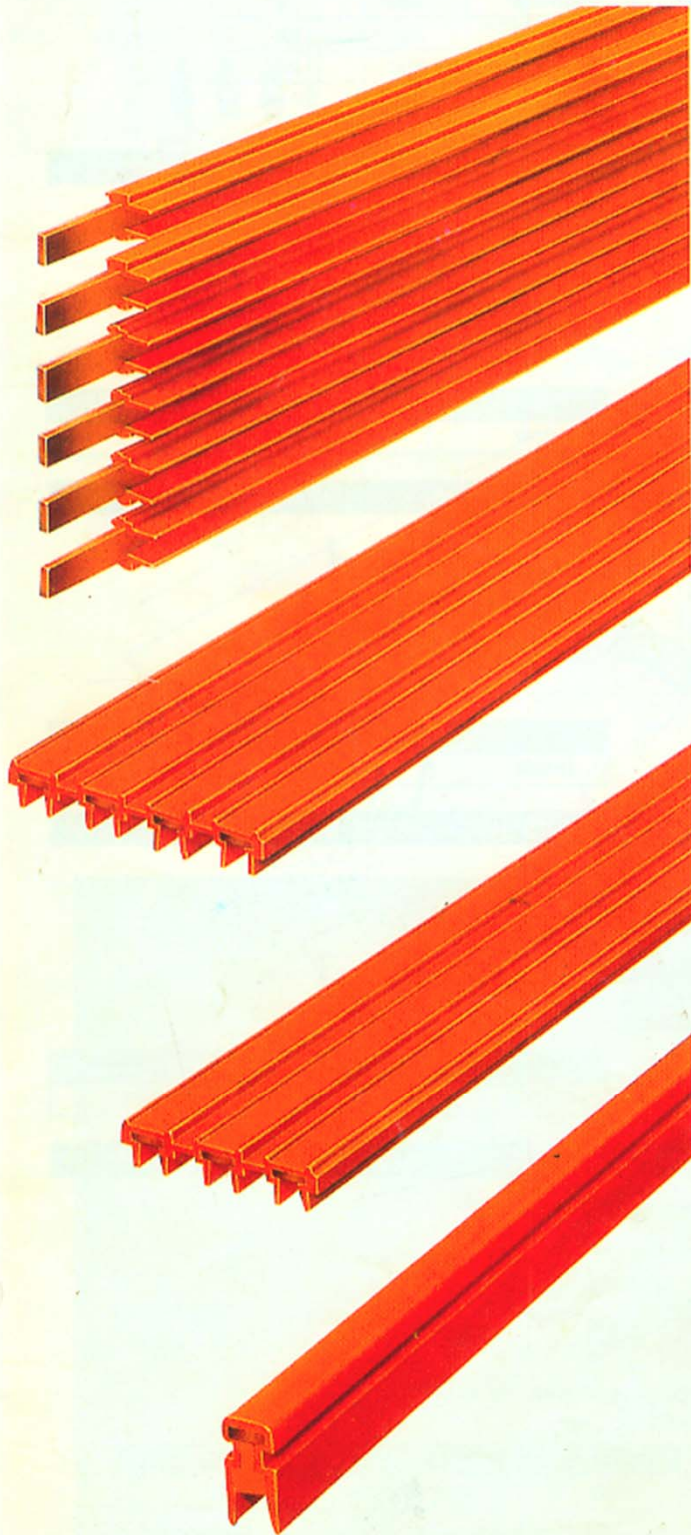


**SAFETY**



# INSULATED TROLLEY SYSTEM

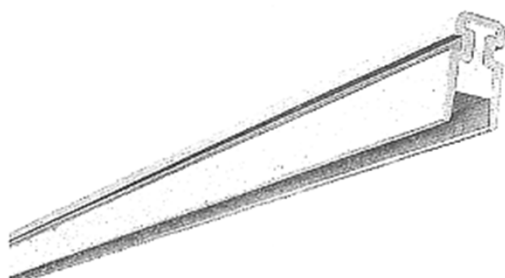




# TRO-REEL (Insulated Trolley) — indoor, outdoor, use.



## 1P 200A main units



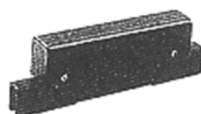
Cat. No.	Rating	Length	Weight (kg)
TH1201	1P600V200A	100m	50
TH1202	1P600V200A	200m	100
TH1203	1P600V200A	300m	150
TH1213	1P600V200A	1300m	650+80

## End tension insulators (with feed-in terminal)

## Joiners (with feed-in terminal)



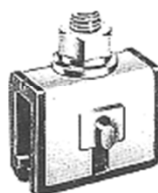
Cat. No.	Rating	Weight (kg)
TH1001	1P600V200A	1.1



Cat. No.	Rating	Weight (kg)
TH1002	1P600V200A	0.7

## Hangers

## Fixed end insulator



Cat. No.	Rating	Weight (kg)
TH1003	1P600V200A	0.12



Cat. No.	Rating	Weight (kg)
TH1004	1P600V200A	0.1

## Collector arms

## Collectors (Replacement parts)

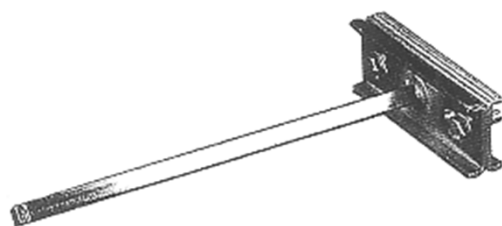


Cat. No.	Rating	Weight (kg)
TH0110	1P600V100A	1.1



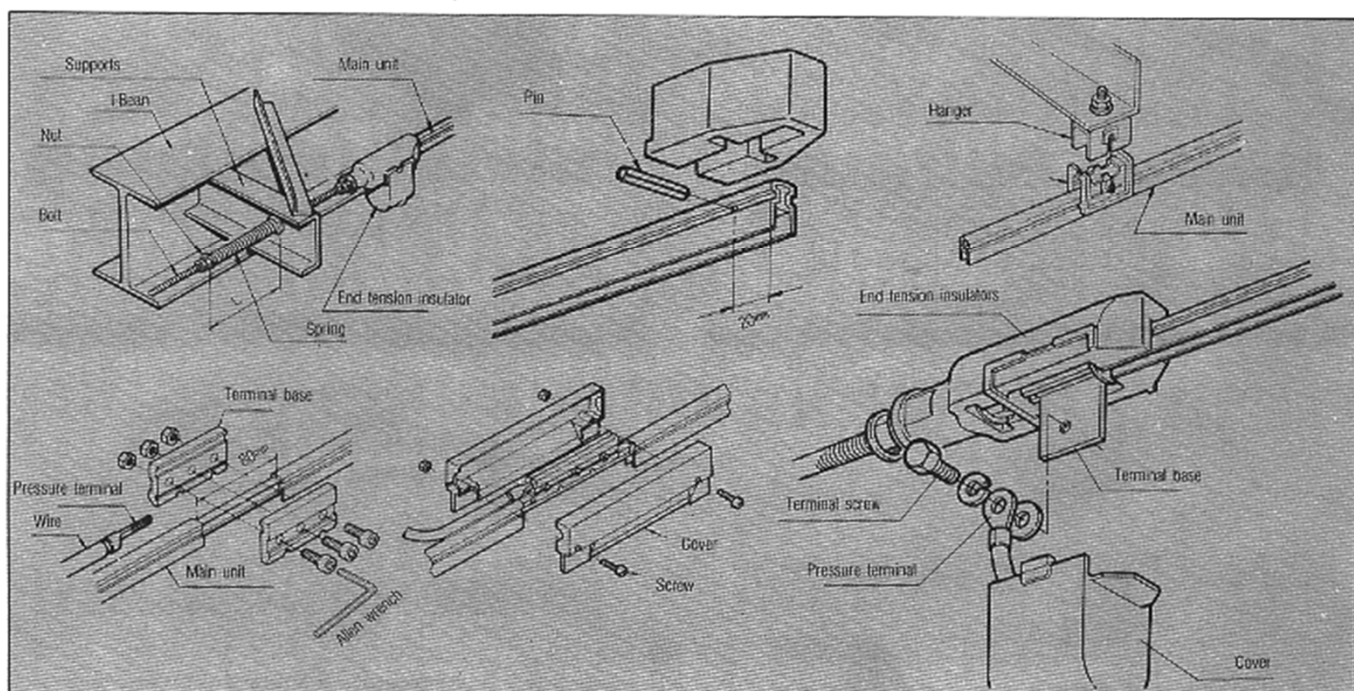
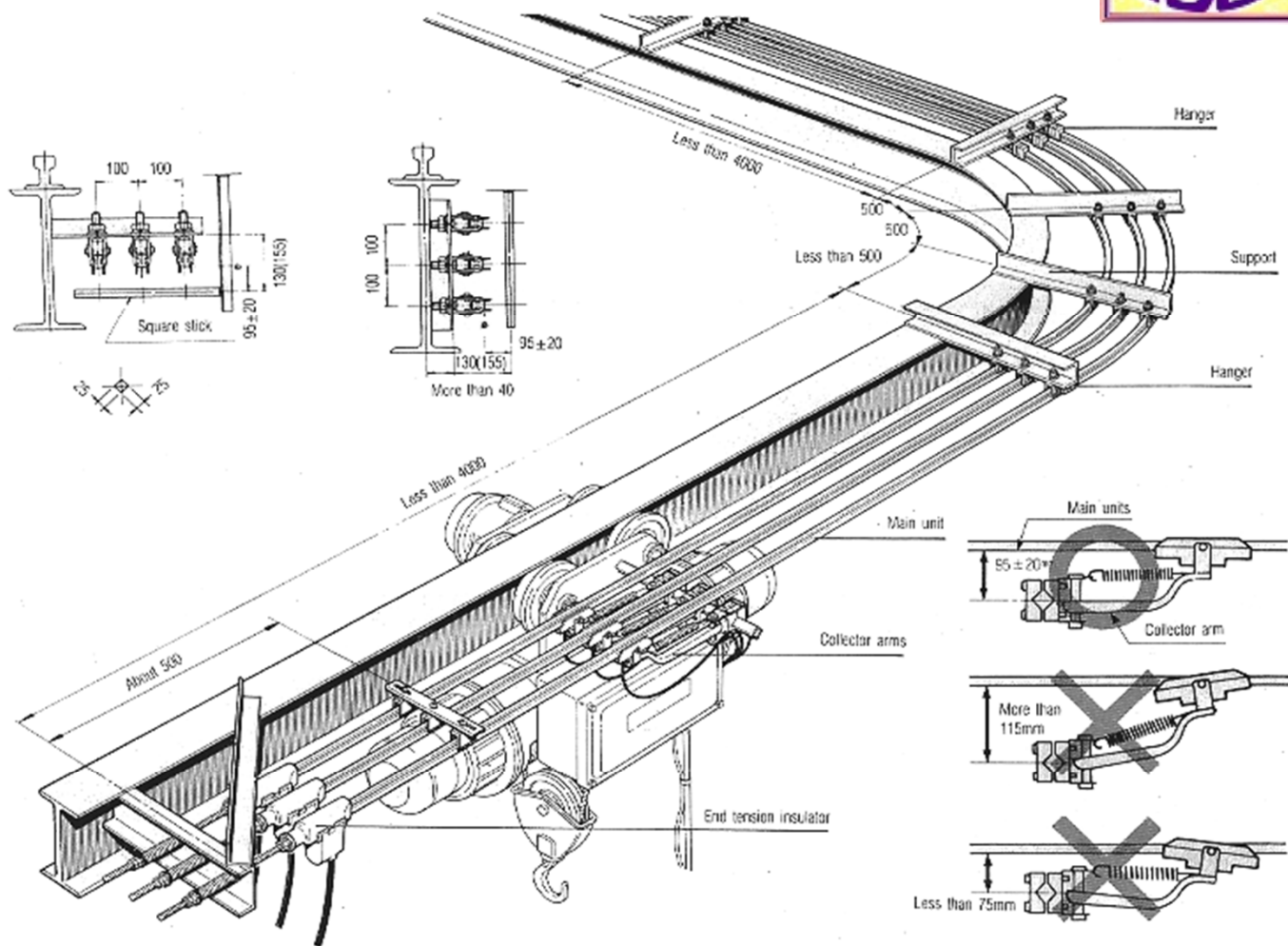
Cat. No.	Rating	Weight (kg)
TH0010	1P600V100A	0.1

## Square stick (For installing collector arm)



Cat. No.	Rating (mm)	Weight (kg)
THC225	25×25×40	2.5

Installation parts





# HIGH-TRO-REEL (Insulated Trolley) — multiple leads, indoor use only



## 3P75A, 100A main units



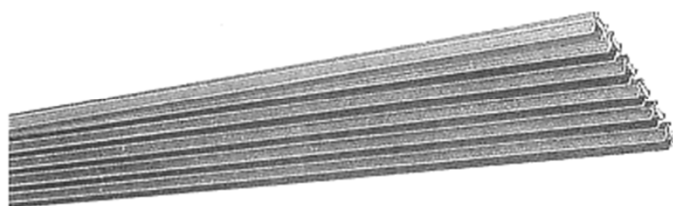
Cat. No.	Rating	Length	Weight (kg)
TH3751	3P600V75A	100m	60
TH3758	3P600V75A	800m	460+60
TH3101	3P600V100A	100m	80
TH3108	3P600V100A	800m	640+80

## 4P75A main units



Cat. No.	Rating	Length	Weight (kg)
TH4751	4P600V75A	100m	110
TH4756	4P600V75A	600m	660+80

## 6P75A main units



Cat. No.	Rating	Length	Weight (kg)
TH6751	6P600V75A	100m	120
TH6754	6P600V75A	400m	480+80

## End tension insulators (with feed-in terminals)



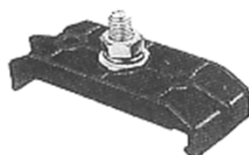
Cat. No.	Rating	Weight (kg)
TH3001	3P600V75, 100A	1.6
TH4001	4P600V75A	2.2
TH6001	6P600V75A	2.9

## Joiners (with feed-in terminals)



Cat. No.	Rating	Weight (kg)
TH3002	3P600V75, 100A	0.2
TH4002	4P600V75A	0.3
TH6002	6P600V75A	0.4

## Hangers



Cat. No.	Rating	Weight (kg)
TH3003	3P	0.06
TH4003	4P	0.07
TH6003	6P	0.09

## Collector arms



Cat. No.	Rating	Weight (kg)
TH0130	1P600V30A	0.17
TH0160	1P600V60A	0.18

## Collectors (Replacement parts)



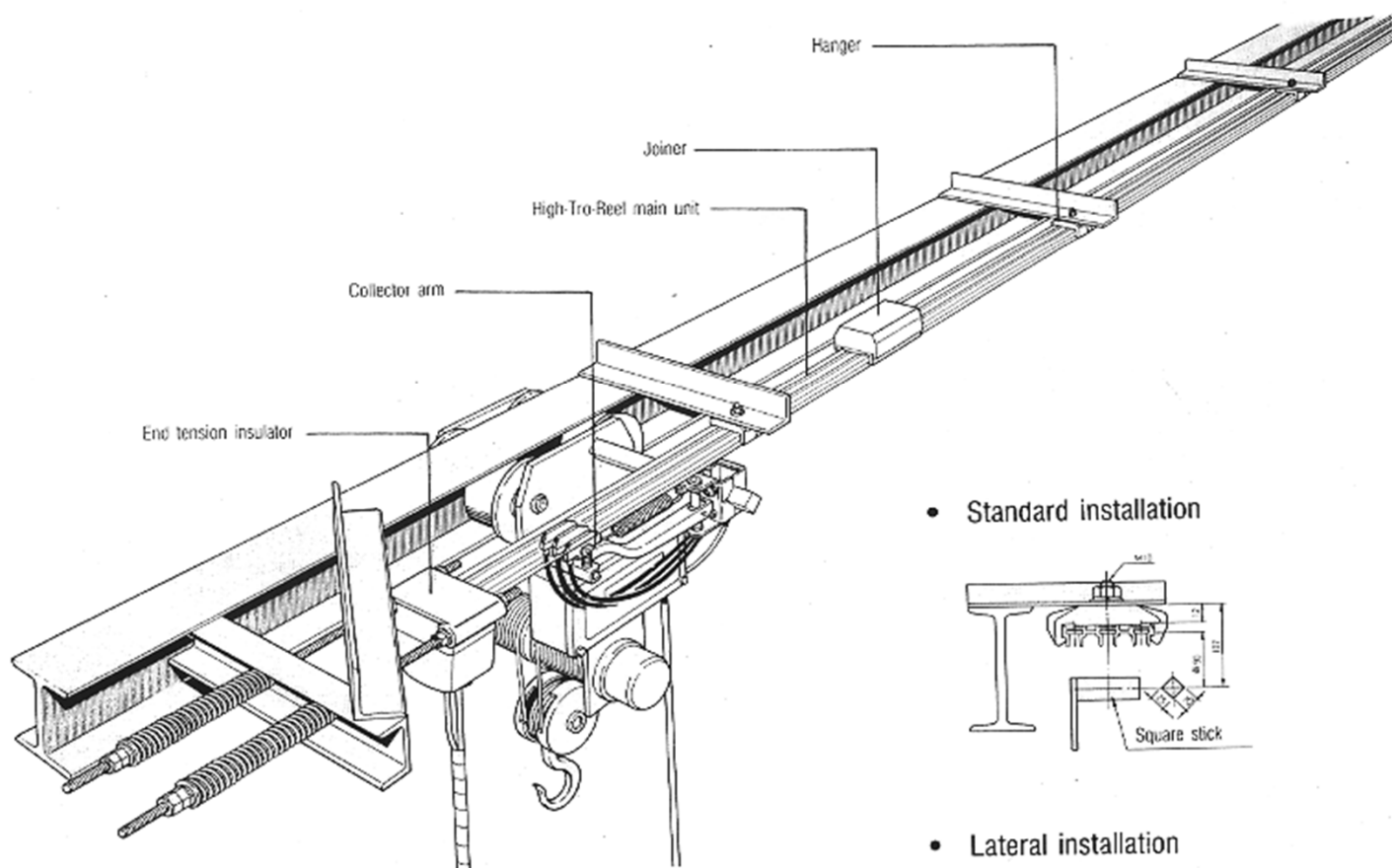
Cat. No.	Rating	Weight (kg)
TH0030	1P600V30A	0.08
TH0060	1P600V60A	0.09

## Square stick (For installing collector arm)

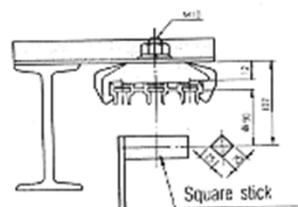


Cat. No.	Rating (mm)	Weight (kg)
TH0213	13×13×280	1.5

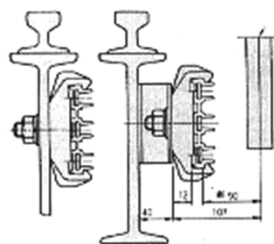
## Installation points

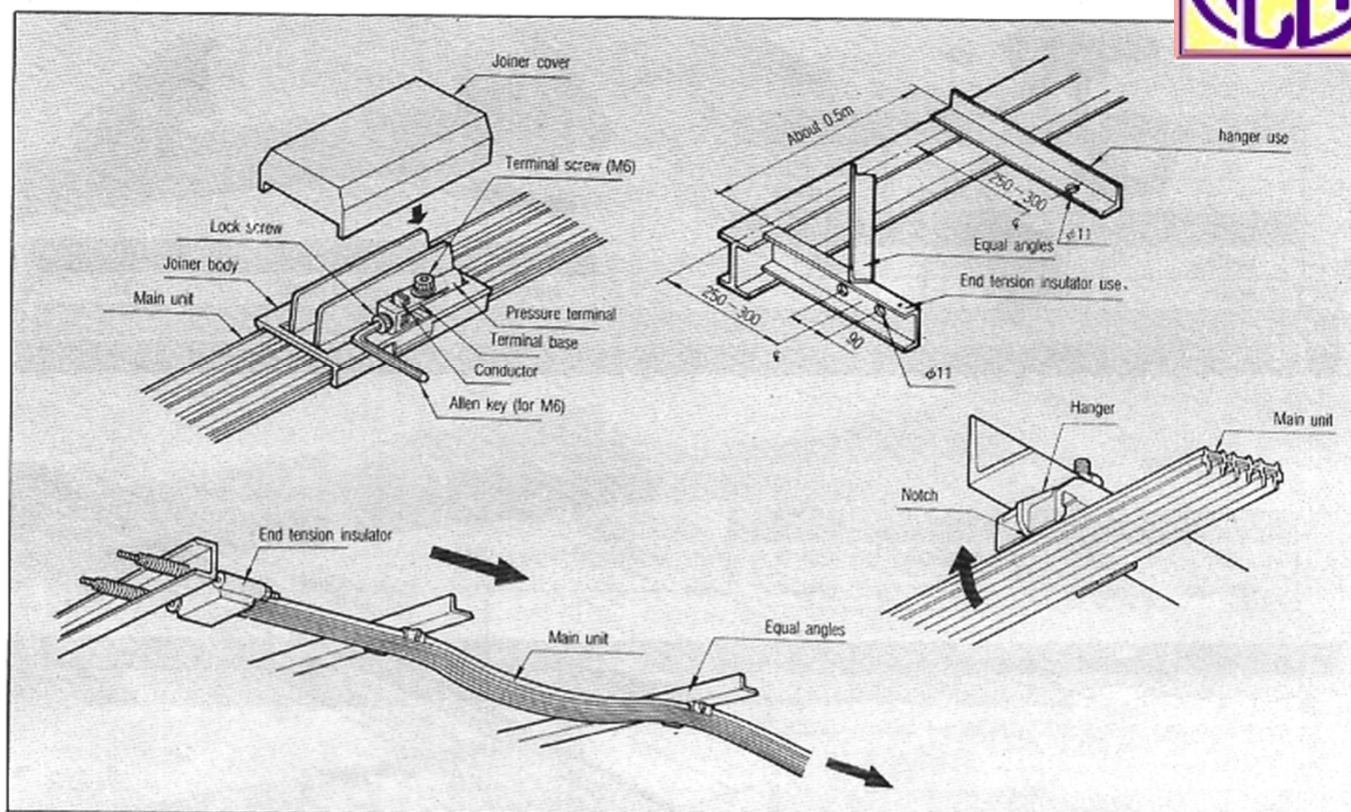


### • Standard installation



### • Lateral installation





### Applications and usage conditions of mobile power source routes

Characteristics of the application	Tro-Reel	High-Tro-Reel (Tension type)
Multiple lines required in very limited installation space		•
Control circuit required (insulated parts and conductor cuttings)	•	
Long lines	•	•
Line adjustments at site required	•	•
Traveling speed of 120 m/min. or higher	•	•
Used in a vertical direction (freight elevator, etc.)	•	•
Laterally facing openings	•	•
Outdoor use	•	
Installation must be done quickly	•	•
Large capacity (exceeding 200A)	•	

### Comparison of the characteristics of the different methods

Methods	Safety (electrical shock)	Flexible installation	Life	Space saving	Wide range of applicability	Advantages to longer installations	Easy maintenance	Materials costs
Tro-Reel	•	○	●	○	●	●	●	△
Cabletyre cables	●	○	△	△	X	△	○	●
Bare trolley lines	X	○	△	X	○	●	○	○

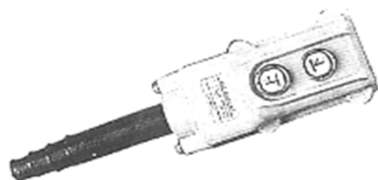
● : Excellent   ○ : Good   △ : Fair   X : Poor



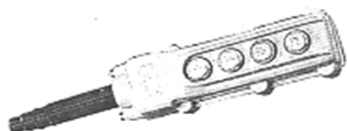
# HOIST PUSH BUTTONS



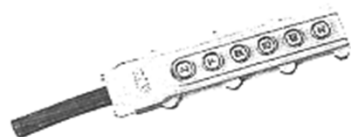
## Indirect



COB61

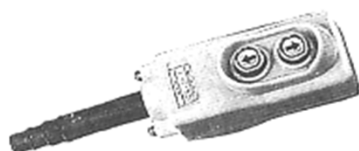


COB62



COB63

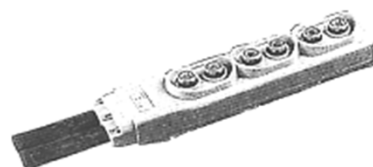
## Direct



COB21



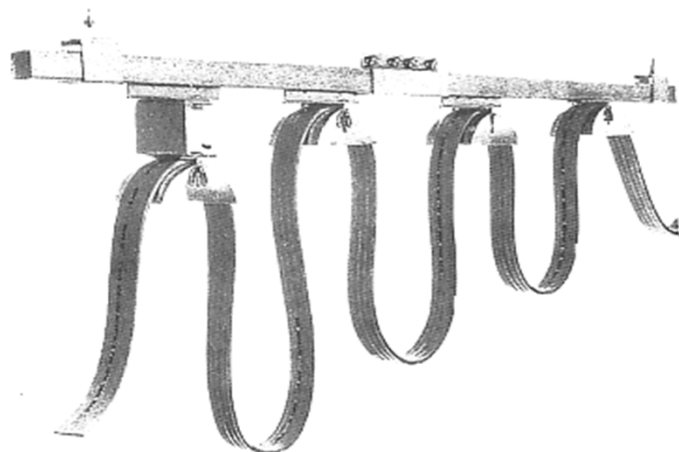
COB22



COB23

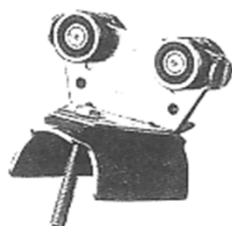
# C-RAIL SYSTEM

## C-Rail

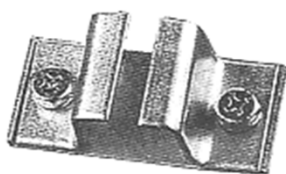


Cat. No.	Description
CH0010	C Rails
CH0020	Cable Trolley
CH0030	Track Support
CH0040	Track Coupler
CH0050	Terminal Box
CH0060	Towing Arm

## Cable Trolley



## Track Support



## Track Coupler

