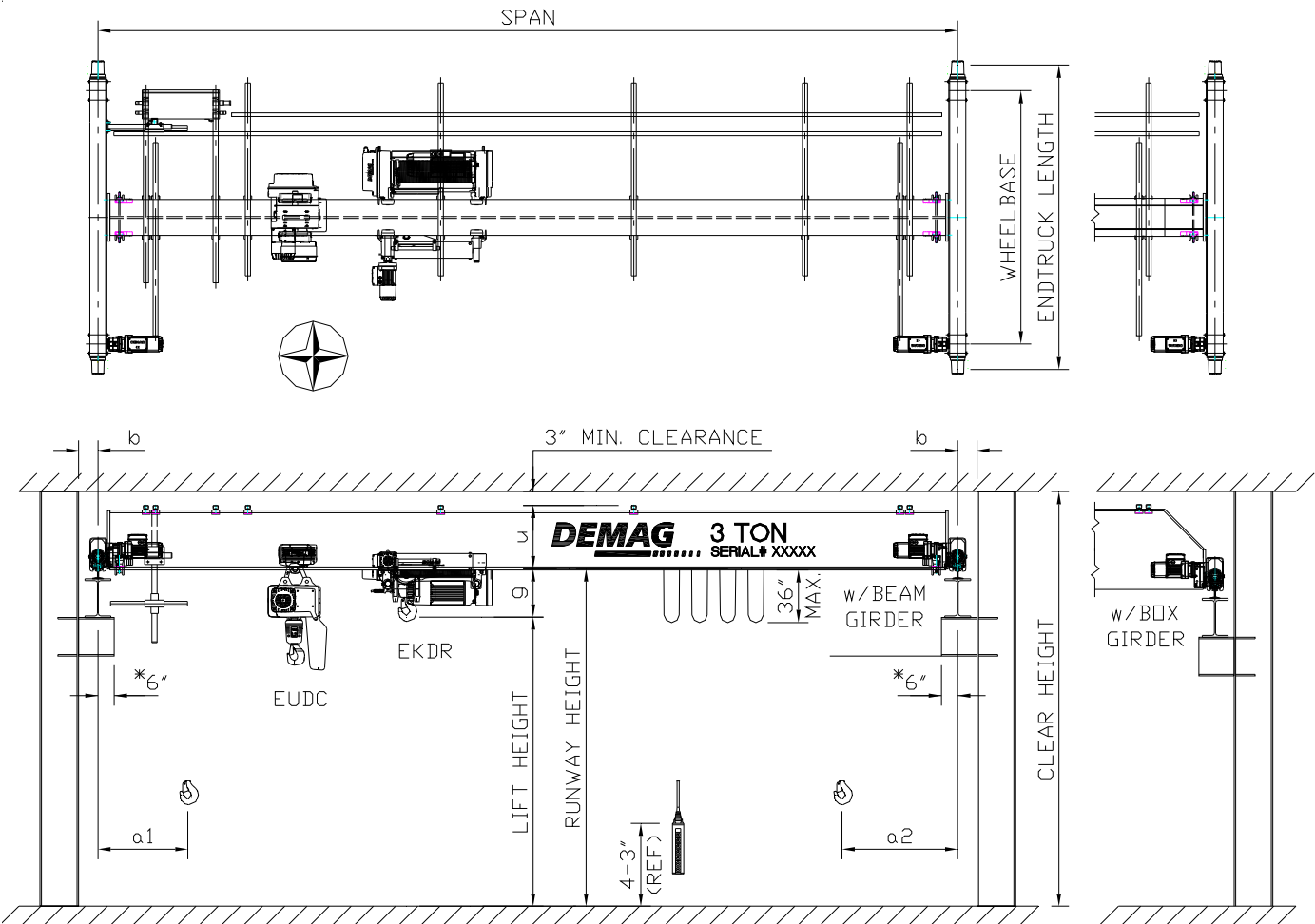


EKKE cranes

Standard cranes with EUDC & EKDR trolleys

Technical data



- NOTES**
1. WHEEL LOADS ARE MAXIMUM AND DO NOT INCLUDE IMPACT.
 2. * HOOK APPROACHES WILL INCREASE IF GREATER THAN 6".

EU DC10 - 2000 2/1 H5 V7.2/1.8

EXAMPLE DEFINED AS:
 LIFTING SPEED m/min (At 60Hz)
 AVAILABLE LIFT IN m (METERS)
 2 PART SINGLE REEVING
 RATED CAPACITY (Kg SINGLE FALL)
 DEMAG CHAIN HOIST SIZE 10
 SINGLE GIRDER STANDARD HEADROOM

EK DR3 - 3.2 4/1 - 10 Z - 6/1

LIFTING SPEED m/min (At 50Hz*)
 CYLINDRICAL ROTOR HOIST MOTOR
 AVAILABLE LIFT IN m (METERS)
 4 PART SINGLE REEVING
 RATED CAPACITY (METRIC TONS)
 DEMAG ROPE HOIST SIZE 3
 SINGLE GIRDER LOW HEADROOM

Note: * DR 2 Speed Hoist operates at 60Hz. Actual hoist speeds are 20% higher.

STANDARD FEATURES

1. QUICK DISCONNECT PLUGS FOR FESTOON, PUSHBUTTON & BRIDGE MOTOR CABLES
2. MANUAL FUSED DISCONNECT SWITCH
3. THERMAL OVERLOAD PROTECTION ALL MOTORS
4. STANDARD VOLTAGE 460V
 (DC PRO, DC COM & DR COM: 575V RATED COMPONENTS AVAILABLE)
 (DR PRO : 575V A 575V/460V STEPDOWN TRANSFORMER IS PROVIDED)
5. RATED CAPACITY IN METRIC TONS. BRIDGE WHEEL LOADS LIST BOTH SHORT AND METRIC TONS.
6. CRANE - CMAA CLASS "C" SERVICE
7. HOIST - CMAA CLASS "D" SERVICE FEM 2M+ (DC* HOIST & DR HOIST)
 * EXCEPTION: DC25-2500 2/1 & DC25-5000 2/1 MODELS RATED CLASS "C"
 ** EXCEPTION: DR10-12.5 4/1 MODEL RATED CLASS "C"
8. DC PRO HOIST - STANDARD FEATURES INCLUDE:
 MOTOR THERMAL MONITORING AND PROTECTION
 MONITORED HOIST BRAKE/CLUTCH SYSTEM PREVENTS OVERLOAD & LOAD SLIPPAGE
 2 SPEED TROLLEY MOTION
 2 SPEED BRIDGE STANDARD (OPTIONAL: VARIABLE SPEED BRIDGE MOTION)
 ELAPSED TIME COUNTER & PARAMETERS RECORDED FOR MAINTENANCE
 COMPUTER SYNC DIAGNOSTICS CAPABILITY
 SLIDING PUSHBUTTON STATION WITH DST STYLE PENDANT
9. DR PRO HOIST - STANDARD FEATURES INCLUDE:
 MOTOR THERMAL MONITORING AND PROTECTION
 MECHANICAL OVERLOAD PROTECTION DEVICE
 HOIST BRAKE LINING MONITOR
 PHASE MONITORING
 4 POSITION GEAR LIMIT SWITCH
 INFINITELY VARIABLE SPEED TROLLEY & BRIDGE MOTIONS
 ONBOARD LCD LOAD/MAINTENANCE DISPLAY ON P/B
 COMPUTER SYNC DIAGNOSTICS CAPABILITY
 SLIDING PUSHBUTTON STATION WITH DSE STYLE PENDANT
10. DR COM HOIST - STANDARD FEATURES INCLUDE:
 MECHANICAL OVERLOAD PROTECTION DEVICE
 4 POSITION GEAR LIMIT SWITCH
 2 SPEED TROLLEY & BRIDGE MOTIONS (OPTIONAL: VARIABLE SPEED BRIDGE MOTION)
 SLIDING PUSHBUTTON STATION WITH DST STYLE PENDANT

CREATE EKKE QUOTATIONS ONLINE INCLUDING PROPOSAL DOCUMENTS AND DRAWINGS

ORDER ON THE WEB USING OUR ONLINE AUTOMATED QUOTATION SYSTEM. www.demag-us.com

Toprunning Single Girder Cranes
Type: EKKE with 1 - EUDC trolley
Dimensional & Technical data

CAPACITY	HOIST/TR	ENDTRUCK		BRIDGE DRIVE				SPAN		BRIDGE DATA												
	HOIST TYPE TROLLEY TYPE QUANTITY 1	DFW-L-E		Available speeds with DCPro or DCCom hoist				MAXIMUM =<		a1	a2	g	u	b	WHEEL LOAD		SHIP WEIGHT					
		DIA.	W.B.	125/31 FPM Standard		160 VFC FPM Optional									S Ton	M Ton						
		in	ft-in	GEARBOX	MTR TYPE	GEARBOX	MTR TYPE	M	FT(Ref.)	in	in	in	in	in	lbs.	lbs.	lbs.					
1 M TON	DCPro 10-1000 1/1 H5 V7.2/1.8 or DCCom 10-1000 1/1 H5 V4.8/1.2 EUDC SHADED AREA WITH WF BEAM GIRDERS	4.4 112	6-7 2000	AME10 DD	ZBF 71A8/2	AME10 DD	ZBA 71B4	35.0:1	0.14/55	17.8:1	0.5 & 0.9	4	13'-2"	18	18	21	14	6	1300	1350	2300	
												5	16'-5"						1350	1450	1400	
												6	19'-8"						1400	1500	1500	
												7	23'-0"						1450	1550	1650	
												8	26'-3"						1450	1550	1750	
												9	29'-6"						1500	1600	1900	
												10	32'-10"						13	1600	1700	2150
												11	36'-1"							1650	1750	2300
												12	39'-4"						15	1700	1800	2550
												13	42'-8"							1750	1850	2700
												14	45'-11"						18	2000	2100	3700
												15	49'-2"							2100	2200	4200
												16	52'-6"						20	2350	2450	5050
												17	55'-9"							2550	2650	5850
												18	59'-0"							2800	2900	6800

* NAMEPLATE & OPERATIONAL HP SHOWN, REFER TO PAGE 30 FOR MOTOR HP DETAILS.

CAPACITY	HOIST DATA			TROLLEY DATA	
	HOIST TYPE MOTOR TYPE & HP	LIFT SPEED	LIFT CHAIN SIZE	TR SIZE & WHEEL DIA. WEIGHT	TROLLEY SPEED MOTOR TYPE & HP
1 M TON	EUDCPro 10-1000 1/1 H5 V7.2/1.8 ZNK100A8/2 0.43/1.74 HP	24/6 FPM	16 FT 7.4 x 21.2	EU11 3.2" (82mm) 132 LBS	80/20 FPM MP 56 M .03/.13 HP
	EUDCPro 10-1000 1/1 H8 V7.2/1.8 ZNK100A8/2 0.43/1.74 HP	24/6 FPM	26 FT 7.4 x 21.2	EU11 3.2" (82mm) 132 LBS	80/20 FPM MP 56 M .03/.13 HP
	EUDCCom 10-1000 1/1 H5 V4.8/1.2 ZNK100A8/2 .31/1.21 HP	16/4 FPM	16 FT 7.4 x 21.2	EU11 3.2" (82mm) 132 LBS	80/20 FPM MP 56 M .03/.13 HP

CAPACITY	HOIST/TR	ENDTRUCK		BRIDGE DRIVE				SPAN		BRIDGE DATA									
	HOIST TYPE TROLLEY TYPE QUANTITY 1	DFW-L-E		with DCPro or DCCom hoist				MAXIMUM ≤ M FT(Ref.)		a1	a2	g	u	b	WHEEL LOAD		SHIP WEIGHT		
		DIA.	W.B.	125/31 FPM Standard		160 VFC FPM Optional									S Ton	M Ton			
		in	ft-in	GEARBOX	MTR TYPE	GEARBOX	MTR TYPE	lbs.	lbs.	in	in	in	in	in					
		mm	mm	RATIO:1	HP	RATIO:1	HP*												
2 M TON	DCPro 10-2000 2/1 H5 V7.2/1.8 or DCCom 10-2000 2/1 H5 V4.8/1.2 EUDC SHADED AREA WITH WF BEAM GIRDERS	4.4	6-7	AME10 DD	ZBF 71A8/2	AME10 DD	ZBA 71B4	4	13'-2"	18	18	25	14	6	2200	2350	1350		
		112	2000	35.0:1	0.14/.55	17.8:1	0.5 & 0.9	5	16'-5"						2250	2450	1450		
									6	19'-8"						2350	2500	1550	
									7	23'-0"						2400	2600	1700	
									8	26'-3"						2500	2700	2100	
									9	29'-6"						2550	2750	2250	
									10	32'-10"						2700	2850	2650	
									11	36'-1"				15		2750	2900	2850	
									12	39'-4"				18		4150	3050	3300	
									13	42'-8"				20		3000	3200	3800	
									14	45'-11"				24		3050	3250	4000	
									15	49'-2"						3350	3550	5150	
				8-3	2500				16	52'-6"						3600	3800	6200	
									17	55'-9"						3700	3900	6500	
									18	59'-0"						3900	4100	7350	
		2 M TON	DCPro 10-2000 2/1 H5 V7.2/1.8 or DCCom 10-2000 2/1 H5 V4.8/1.2 EUDC WITH BOX GIRDERS	4.4	6-7	AME10 DD	ZBF 71A8/2	AME10 DD	ZBA 71B4	4	13'-2"	18	18	25	19	6	2300	2250	1850
				112	2000	35.0:1	0.14/.55	17.8:1	0.5 & 0.9	5	16'-5"						2400	2550	2050
											6	19'-8"						2500	2650
									7	23'-0"						2600	2750	2600	
									8	26'-3"						2650	2850	2800	
									9	29'-6"						2750	2900	3000	
									10	32'-10"						2800	3000	3250	
									11	36'-1"						2250	3050	3450	
									12	39'-4"						2950	3100	3700	
									13	42'-8"						3000	3200	3900	
									14	45'-11"				23		3150	3350	4450	
									15	49'-2"						3200	3400	4700	
									16	52'-6"						3300	3500	5100	
									17	55'-9"						3400	3550	5350	
									18	59'-0"				27		3550	3750	6000	
									19	62'-4"						3600	3800	6250	
									20	65'-7"				24	28	3850	4050	7200	
								AME20 DD 20.1:1		21	68'-11"					4000	4200	7850	
										22	72'-2"					4100	4250	8050	
										23	75'-5"					4200	4400	8550	
										24	78'-9"					4450	4650	9600	
										25	82'-0"				35	7	4950	5150	11700
										26	85'-3"					36	5350	5500	13100
										27	88'-7"					35	5450	5600	13450
										28	91'-10"						5650	5850	14300
										29	95'-1"				39		5900	6100	15350
										30	98'-5"						6000	6200	15750
2 M TON	HOIST DATA				TROLLEY DATA														
	HOIST TYPE MOTOR TYPE & HP				LIFT SPEED	LIFT ROPE DIA.	TR SIZE & WHEEL DIA. WEIGHT			TROLLEY SPEED MOTOR TYPE & HP									
	EUDCPro 10-2000 2/1 H5 V7.2/1.8 ZNK100B8/2 0.87/3.62 HP				24/6 FPM	16 FT 7.4 x 21.2	EU34 4.4" (112mm) 187 LBS			80/20 FPM MP 56 L .07/.27 HP									
	EUDCPro 10-2000 2/1 H8 V7.2/1.8 ZNK100B8/2 0.87/3.62 HP				24/6 FPM	26 FT 7.4 x 21.2	EU34 4.4" (112mm) 187 LBS			80/20 FPM MP 56 L .07/.27 HP									
EUDCCom 10-2000 2/1 H5 V4.8/1.2 ZNK100B8/2 .50/2.01 HP				16/4 FPM	16 FT 7.4 x 21.2	EU34 4.4" (112mm) 187 LBS			80/20 FPM MP 56 L .07/.27 HP										
Supercedes 900 435 49 - 2/06				Crane Product Department						Classification No. 714 IS 111									

Toprunning Single Girder Cranes
Type: EKKE with 1 - EUDC trolley
Dimensional & Technical data

CAPACITY	HOIST/TR	ENDTRUCK		BRIDGE DRIVE				SPAN		BRIDGE DATA																				
	HOIST TYPE TROLLEY TYPE QUANTITY 1	DFW-L-E		with DCPPro hoist				MAXIMUM		a1	a2	g	u	b	WHEEL LOAD		SHIP WEIGHT													
		DIA.	W.B.	125/31 FPM Standard		160 VFC FPM Optional		=<							S Ton	M Ton														
		in	ft-in	GEARBOX	MTR TYPE	GEARBOX	MTR TYPE	M	FT(Ref.)						Lbs.	Lbs.														
mm	mm	RATIO:1	HP	RATIO:1	HP*			in	in	in	in	in			Lbs.															
2 M TON	DCPro 25-2000 1/1 H5 V9.6/2.4 EUDC SHADED AREA WITH WF BEAM GIRDERS	4.4 112	6-7 2000	AME10 DD 35.0:1	ZBF 71A8/2 0.14/55	AME10 DD 17.8:1	ZBA 71B4 0.5 & 0.9	4	13'-2"	18	18	28	14	6	2250	2400	1450													
								5	16'-5"						2300	2500	1550													
								6	19'-8"						2400	2550	1700													
								7	23'-0"						2450	2650	1800													
								8	26'-3"						2550	2750	2200													
								9	29'-6"						2600	2800	2350													
								10	32'-10"						2750	2900	2750													
								11	36'-1"						2800	3000	2950													
								12	39'-4"						2900	3100	3450													
								13	42'-8"						3050	3250	3900													
								14	45'-11"						3100	3300	4100													
								15	49'-2"						3400	3600	5500													
								16	52'-6"						3650	3850	6300													
								17	55'-9"						3750	3950	6650													
								18	59'-0"						3950	4150	7500													
								2 M TON	DCPro 25-2000 1/1 H5 V9.6/2.4 EUDC WITH BOX GIRDERS						4.4 112	6-7 2000	AME10 DD 35.0:1	ZBF 71A8/2 0.14/55	AME10 DD 17.8:1	ZBA 71B4 0.5 & 0.9	4	13'-2"	18	18	28	19	6	2350	2500	1950
																					5	16'-5"						2450	2600	2150
																					6	19'-8"						2550	2700	2350
7	23'-0"	2650	2800	2700																										
8	26'-3"	2700	2900	2900																										
9	29'-6"	2800	2950	3150																										
10	32'-10"	2850	3050	3350																										
11	36'-1"	2900	3100	3600																										
12	39'-4"	3000	3200	3800																										
13	42'-8"	3050	3250	4050																										
14	45'-11"	3200	3400	4550																										
15	49'-2"	3250	3450	4800																										
16	52'-6"	3350	3550	5250																										
17	55'-9"	3450	3650	5450																										
18	59'-0"	3600	3800	6100																										
19	62'-4"	3650	3850	6350																										
20	65'-7"	3900	4100	7300																										
21	68'-11"	4050	4250	7950																										
22	72'-2"	4150	4350	8150																										
23	75'-5"	4250	4450	8650																										
24	78'-9"	4550	4700	9700																										
25	82'-0"	5050	5200	11800																										
26	85'-3"	5400	5600	13200																										
27	88'-7"	5500	5700	13600																										
28	91'-10"	5700	5900	14450																										
29	95'-1"	5950	6150	15450																										
30	98'-5"	6050	6250	15850																										
4.4 112	10-4 3150	AME20 DD 20.1:1	ZBA 90A4 1.5 & 2.6	20	65'-7"	27	28			3900	4100	7300																		
				21	68'-11"					4050	4250	7950																		
				22	72'-2"					4150	4350	8150																		
				23	75'-5"			4250	4450	8650																				
				24	78'-9"			4550	4700	9700																				
				25	82'-0"			5050	5200	11800																				
8 200	13-2 4000	AME30 DD 55.7:1	ZBF 80A8/2 0.21/80	AME30 DD 31.3:1	ZBA 90A4 1.5 & 2.6	27	35	7	5050	5200	11800																			
								26	85'-3"	5400	5600	13200																		
								27	88'-7"	5500	5700	13600																		
								28	91'-10"	5700	5900	14450																		
								29	95'-1"	5950	6150	15450																		
								30	98'-5"	6050	6250	15850																		

* NAMEPLATE & OPERATIONAL HP SHOWN, REFER TO PAGE 30 FOR MOTOR HP DETAILS.

2 M TON	HOIST DATA			TROLLEY DATA	
	HOIST TYPE MOTOR TYPE & HP	LIFT SPEED	LIFT ROPE DIA.	TR SIZE & WHEEL DIA. WEIGHT	TROLLEY SPEED MOTOR TYPE & HP
	EUDCPro 25-2000 1/1 H5 V9.6/2.4 ZNK100C8/2 1.54/6.0 HP	32/8 FPM	16 FT	10.5 x 28.2	EU34 4.4" (112mm) 297 LBS
EUDCPro 25-2000 1/1 H8 V9.6/2.4 ZNK100C8/2 1.54/6.0 HP	32/8 FPM	26 FT	10.5 x 28.2	EU34 4.4" (112mm) 315 LBS	80/20 FPM MP 56 L .07/.27 HP

Supercedes
900 435 49 - 2/06

Crane Product Department

Classification No.
714 IS 111

CAPACITY	HOIST/TR	ENDTRUCK		BRIDGE DRIVE				SPAN		BRIDGE DATA																				
	HOIST TYPE	DFW-L-E		with DCPro hoist				MAXIMUM ≤ M FT(Ref.)		a1	a2	g	u	b	WHEEL LOAD		SHIP WEIGHT													
		TROLLEY TYPE	DIA.	W.B.	125/31 FPM Standard		160 VFC FPM Optional								S Ton	M Ton														
	QUANTITY 1	in	ft-in	GEARBOX	MTR TYPE	GEARBOX	MTR TYPE	in	in	in	in	in	lbs.	lbs.	lbs.															
2.5 M TON	DCPro 25-2500 1/1 H5 V9.6/2.4 EUDC SHADED AREA WITH WF BEAM GIRDERS	4.4 112	6-7 2000	AME10 DD 35.0:1	ZBF 71A8/2 0.14/55	AME10 DD 17.8:1	ZBA 71B4 0.5 & 0.9	4	13'-2"	18	18	28	15	6	2700	2950	1700													
								5	16'-5"						2850	3050	1900													
								6	19'-8"						2900	3150	2050													
								7	23'-0"						3000	3250	2300													
								8	26'-3"						3100	3300	2500													
								9	29'-6"						3200	3450	2900													
								10	32'-10"						3350	3550	3350													
								11	36'-1"						3400	3650	3600													
								12	39'-4"						3550	3800	4150													
								13	42'-8"						3700	3950	4800													
								14	45'-11"						3800	4050	5100													
								15	49'-2"						4000	4250	5900													
								16	52'-6"						4350	4600	7150													
								17	55'-9"						4600	4850	8100													
								18	59'-0"						4850	5100	9100													
								2.5 M TON	DCPro 25-2500 1/1 H5 V9.6/2.4 EUDC WITH BOX GIRDERS						4.4 112	6-7 2000	AME10 DD 35.0:1	ZBF 71A8/2 0.14/55	AME10 DD 17.8:1	ZBA 71B4 0.5 & 0.9	4	13'-2"	18	18	28	19	6	2800	3000	2000
																					5	16'-5"						2900	3150	2250
																					6	19'-8"						3000	3250	2450
7	23'-0"	3100	3350	2700																										
8	26'-3"	3200	3400	2900																										
9	29'-6"	3250	3500	3150																										
10	32'-10"	3350	3550	3350																										
11	36'-1"	3450	3700	3850																										
12	39'-4"	3550	3800	4100																										
13	42'-8"	3650	3900	4550																										
14	45'-11"	3750	4000	4900																										
15	49'-2"	3850	4100	5200																										
16	52'-6"	3950	4200	5600																										
17	55'-9"	4100	4350	6150																										
18	59'-0"	4200	4450	6550																										
19	62'-4"	4250	4500	6850																										
5 125	10-4 3150	ZBF 80A8/2 0.21/80	AME20 DD 20.1:1	20	65'-7"	21	68'-11"			22	72'-2"	27	28	32							7	4550						4800	8000	
																						23						75'-5"	4750	5000
															24	78'-9"	5050	5250	9800											
															25	82'-0"	5100	5350	10150											
															26	85'-3"	5700	5950	12550											
															27	88'-7"	6000	6250	13600											
															28	91'-10"	6250	6500	14600											
															29	95'-1"	6550	6800	15950											
															30	98'-5"	6600	6850	16100											
																	6700	6950	16550											

* NAMEPLATE & OPERATIONAL HP SHOWN, REFER TO PAGE 30 FOR MOTOR HP DETAILS.

2.5 M TON	HOIST DATA			TROLLEY DATA		
	HOIST TYPE MOTOR TYPE & HP	LIFT SPEED	LIFT ROPE DIA.	TR SIZE & WHEEL DIA. WEIGHT	TROLLEY SPEED MOTOR TYPE & HP	
	EUDCPro 25-2500 1/1 H5 V9.6/2.4 ZNK100C8/2 1.54/6.0 HP	32/8 FPM	16 FT 10.5 x 28.2	EU34 4.4" (112mm) 297 LBS	46/11.5 FPM MP 56 XL .05/.20 HP	
EUDCPro 25-2500 1/1 H8 V9.6/2.4 ZNK100C8/2 1.54/6.0 HP	32/8 FPM	26 FT 10.5 x 28.2	EU34 4.4" (112mm) 315 LBS	46/11.5 FPM MP 56 XL .05/.20 HP		

Toprunning Single Girder Cranes
Type: EKKE with 1 - EUDC trolley
Dimensional & Technical data

CAPACITY	HOIST/TR	ENDTRUCK		BRIDGE DRIVE				SPAN		BRIDGE DATA																				
	HOIST TYPE TROLLEY TYPE QUANTITY 1	DFW-L-E		with DCPPro hoist				MAXIMUM =< M FT(Ref.)		a1	a2	g	u	b	WHEEL LOAD		SHIP WEIGHT													
		DIA.	W.B.	125/31 FPM Standard		160 VFC FPM Optional									S Ton	M Ton														
		in	ft-in	GEARBOX	MTR TYPE	GEARBOX	MTR TYPE	Lbs.	Lbs.	Lbs.																				
		mm	mm	RATIO:1	HP	RATIO:1	HP*			in	in	in	in	in																
3.2 M TON	DCPro 16-3200 2/1 H5 V4.8/1.2 EUDC SHADED AREA WITH WF BEAM GIRDERS	4.4 112	6-7 2000	AME10 DD 35.0:1	ZBF 71A8/2 0.14/55	AME10 DD 17.8:1	ZBA 71B4 0.5 & 0.9	4	13'-2"	18	18	32	15	6	3350	3600	1700													
								5	16'-5"						3450	3750	1900													
								6	19'-8"						3550	3850	2050													
								7	23'-0"						3650	3950	2300													
								8	26'-3"						3750	4050	2500													
								9	29'-6"						3850	4150	2900													
								10	32'-10"						4000	4300	3350													
								11	36'-1"						4050	4350	3600													
								12	39'-4"						4250	4550	4150													
								13	42'-8"						4400	4700	4800													
								14	45'-11"						4500	4800	5100													
								15	49'-2"						4700	5000	5900													
								16	52'-6"						5000	5300	7150													
								17	55'-9"						5250	5550	8100													
								18	59'-0"						5500	5850	9100													
								3.2 M TON	DCPro 16-3200 2/1 H5 V4.8/1.2 EUDC WITH BOX GIRDERS						4.4 112	6-7 2000	AME10 DD 35.0:1	ZBF 71A8/2 0.14/55	AME10 DD 17.8:1	ZBA 71B4 0.5 & 0.9	4	13'-2"	18	18	32	19	6	3400	3700	2000
																					5	16'-5"						3550	3850	2250
																					6	19'-8"						3650	3950	2450
7	23'-0"	3750	4050	2700																										
8	26'-3"	3850	4150	2900																										
9	29'-6"	3900	4200	3150																										
10	32'-10"	4000	4300	3350																										
11	36'-1"	4150	4450	3850																										
12	39'-4"	4200	4500	4100																										
13	42'-8"	4350	4650	4550																										
14	45'-11"	4450	4750	4900																										
15	49'-2"	4500	4800	5150																										
16	52'-6"	4650	4950	5600																										
17	55'-9"	4750	5100	6150																										
18	59'-0"	4900	5200	6550																										
19	62'-4"	4950	5250	6850																										
		5 125	10-4 3150	ZBF 80A8/2 0.21/80	AME20 DD 20.1:1	AME30 DD 31.3:1	ZBA 90A4 1.5 & 2.6			20	65'-7"	31	28	32							7	5250						5550	8000	
21	68'-11"									5350	5650											8400								
22	72'-2"									5450	5750				8750															
23	75'-5"									5700	6000				9800															
24	78'-9"									5800	6100				10150															
25	82'-0"									6400	6700				12550															
		8 200	13-2 4000	AME30 DD 55.7:1	AME30 DD 31.3:1	AME30 DD 31.3:1	ZBA 90A4 1.5 & 2.6			26	85'-3"	35	36	35	36	6650	7000	13600												
27	88'-7"									6900	7250					14600														
28	91'-10"									7250	7550					15950														
29	95'-1"									7300	7600					16100														
30	98'-5"									7400	7750					16550														

* NAMEPLATE & OPERATIONAL HP SHOWN, REFER TO PAGE 30 FOR MOTOR HP DETAILS.

3.2 M TON	HOIST DATA			TROLLEY DATA		
	HOIST TYPE MOTOR TYPE & HP	LIFT SPEED	LIFT ROPE DIA.	TR SIZE & WHEEL DIA. WEIGHT	TROLLEY SPEED MOTOR TYPE & HP	
	EUDCPro 16-3200 2/1 H5 V4.8/1.2 ZNK100B8/2 0.87/3.62 HP	16/4 FPM	16 FT	10.5 x 28.2	EU34 4.4" (112mm) 293 LBS	46/11.5 FPM MP 56 XL .05/.20 HP
EUDCPro 16-3200 2/1 H8 V4.8/1.2 ZNK100B8/2 0.87/3.62 HP	16/4 FPM	26 FT	10.5 x 28.2	EU34 4.4" (112mm) 318 LBS	46/11.5 FPM MP 56 XL .05/.20 HP	

Supercedes
900 435 49 - 2/06

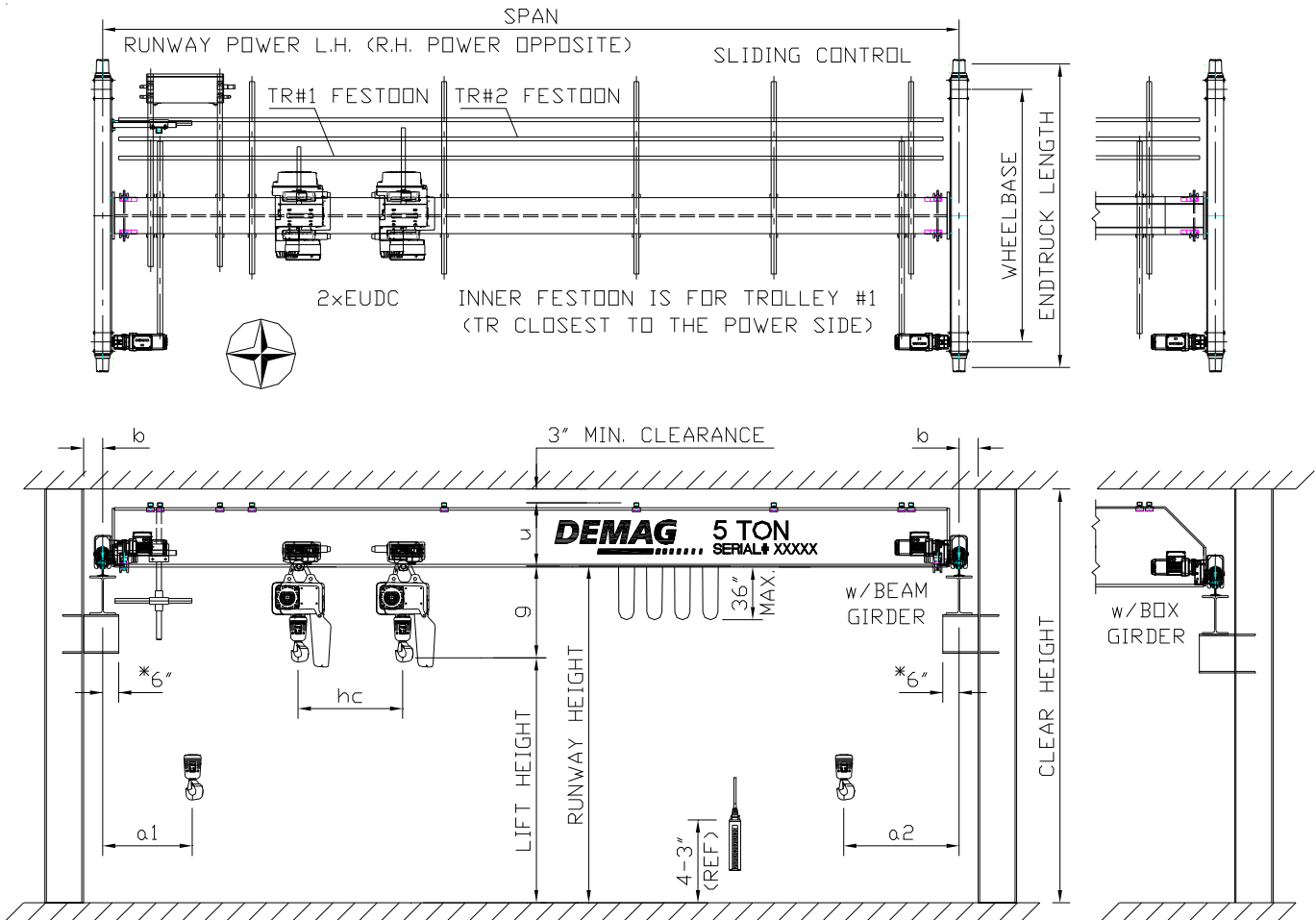
Crane Product Department

Classification No.
714 IS 111

CAPACITY	HOIST/TR	ENDTRUCK		BRIDGE DRIVE				SPAN		BRIDGE DATA																						
	HOIST TYPE TROLLEY TYPE QUANTITY 1	DFW-L-E		with DCPro hoist				MAXIMUM ≤ M FT(Ref.)		a1	a2	g	u	b	WHEEL LOAD		SHIP WEIGHT															
		DIA.	W.B.	125/31 FPM Standard		160 VFC FPM Optional									S Ton	M Ton																
		in	ft-in	GEARBOX	MTR TYPE	GEARBOX	MTR TYPE	lbs.	lbs.	lbs.																						
5 M TON	DCPro 25-5000 2/1 H5 V4.8/1.2 EUDC SHADED AREA WITH WF BEAM GIRDERS	4.4 112	6-7 2000	AME10 DD 35.0:1	ZBF 71A8/2 0.14/.55	AME10 DD 17.8:1	ZBA 90A4 1.5 & 2.6	4	13'-2"	18	18	33	18	6	5000	5450	2000															
															5200	5650	2150															
															5350	5800	2500															
															5450	5950	2750															
															5650	6100	3250															
															5800	6300	3800															
															5900	6400	4100															
															6000	6500	4350															
															6200	6700	5100															
															6400	6900	5800															
															6500	7000	6150															
															6750	7250	7150															
															7100	7600	8400															
															7450	7950	9800															
															8000	8450	11900															
															5 M TON	DCPro 25-5000 2/1 H5 V4.8/1.2 EUDC WITH BOX GIRDERS	4.4 112	6-7 2000	AME10 DD 35.0:1	ZBF 71A8/2 0.14/.55	AME10 DD 17.8:1	ZBA 90A4 1.5 & 2.6	4	13'-2"	18	18	34	19	6	5050	5500	2150
																														5250	5700	2350
																														5400	5850	2600
5500	5950	2800																														
5600	6050	3050																														
5700	6150	3250																														
5850	6300	3750																														
5900	6400	3950																														
6000	6500	4300																														
6150	6600	4750																														
6200	6700	5000																														
6400	6900	5650																														
6550	7000	6100																														
6750	7250	6950																														
6800	7300	7100																														
6900	7350	7400																														
7250	7750	8900																														
7300	7800	9000																														
7550	8050	10050																														
7650	8150	10450																														
7750	8250	10800																														
8350	8850	13250																														
8800	9250	14900																														
8900	9400	15300																														
9250	9750	16650																														
9300	9800	16850																														
9900	10400	19250																														

* NAMEPLATE & OPERATIONAL HP SHOWN, REFER TO PAGE 30 FOR MOTOR HP DETAILS.

5 M TON	HOIST DATA			TROLLEY DATA	
	HOIST TYPE MOTOR TYPE & HP	LIFT SPEED	LIFT ROPE DIA.	TR SIZE & WHEEL DIA. WEIGHT	TROLLEY SPEED MOTOR TYPE & HP
	EUDCPro 25-5000 2/1 H5 V4.8/1.2 ZNK100C8/2 1.54/6.0 HP	16/4 FPM	16 FT	EU56 5" (125mm) 419 LBS	100/25 FPM ZBF71A8/2 .14/.55 HP
EUDCPro 25-5000 2/1 H8 V4.8/1.2 ZNK100C8/2 1.54/6.0 HP	16/4 FPM	26 FT	EU56 5" (125mm) 452 LBS	100/25 FPM ZBF71A8/2 .14/.55 HP	



NOTES FOR CRANES WITH SIMULTANEOUS & INDEPENDANT CONTROL

1. FOR OPERATION WITH 2 IDENTICAL HOIST TROLLEY UNITS
2. SELECTION FOR OPERATION OF HOIST 1, 2 OR BOTH*. (*STANDARD ARRANGEMENT - BOTH LIFTING OR BOTH LOWERING)
3. REFER TO PAGE ONE FOR STANDARD CRANE FEATURES
4. WHEEL LOADS ARE MAXIMUM AND DO NOT INCLUDE IMPACT.
5. * HOOK APPROACHES WILL INCREASE IF GREATER THAN 6".

Toprunning Single Girder Cranes
Type: EKKE with 2 - EUDC trolleys
Dimensional & Technical data

CAPACITY	HOIST/TR	ENDTRUCK		BRIDGE DRIVE				SPAN		BRIDGE DATA									
	HOIST TYPE	DFW-L-E		Available with DCPPro or DCCom hoist				MAXIMUM <=		a1	a2	g	u	b	WHEEL LOAD		SHIP WEIGHT		
		TROLLEY TYPE	DIA.	W.B.	125/31 FPM Standard		160 VFC FPM Optional								M	FT(Ref.)		S Ton	M Ton
QUANTITY 2	in	ft-in	GEARBOX RATIO:1	MTR TYPE HP	GEARBOX RATIO:1	MTR TYPE HP	in	in	in	in	in	lbs.	lbs.	lbs.					
2 M TON	DCPro 10-1000 1/1 H5 V7.2/1.8 or DCCom 10-1000 1/1 H5 V4.8/1.2 EUDC Hook Centers hc=18" SHADED AREA WITH WF BEAM GIRDERS	4.4	6-7	AME10 DD	ZBF 71A8/2	AME10 DD	ZBA 71B4	4	13'-2"	18	18	21	14	6	2100	2300	1550		
		112	2000	35.0:1	0.14/.55	17.8:1	0.5 & 0.9	5	16'-5"						2200	2400	1650		
									6	19'-8"						2300	2500	1800	
									7	23'-0"						2350	2550	1900	
									8	26'-3"						2500	2700	2300	
									9	29'-6"						2550	2750	2450	
									10	32'-10"						2700	2850	2850	
									11	36'-1"				15		2750	2950	3050	
									12	39'-4"				18		2900	3050	3550	
									13	42'-8"				20		3000	3200	4000	
									14	45'-11"				20		3100	3250	4250	
									15	49'-2"				20		3400	3550	5400	
				8-3					16	52'-6"						3650	3850	6450	
				2500					17	55'-9"						3750	3950	6750	
									18	59'-0"						3950	4150	7600	
		2 M TON	DCPro 10-1000 1/1 H5 V7.2/1.8 or DCCom 10-1000 1/1 H5 V4.8/1.2 EUDC Hook Centers hc=18" WITH BOX GIRDERS	4.4	6-7	AME10 DD	ZBF 71A8/2	AME10 DD	ZBA 71B4	4	13'-2"	18	18	21	19	6	2200	2400	1950
				112	2000	35.0:1	0.14/.55	17.8:1	0.5 & 0.9	5	16'-5"						2350	2500	2150
											6	19'-8"						2450	2600
									7	23'-0"						2550	2750	2700	
									8	26'-3"						2650	2850	2900	
									9	29'-6"						2750	2900	3150	
									10	32'-10"						2800	3000	3350	
									11	36'-1"						2900	3050	3600	
									12	39'-4"						2950	3150	3800	
									13	42'-8"						3000	3200	4050	
									14	45'-11"				23		3150	3350	4550	
									15	49'-2"						3250	3400	4800	
									16	52'-6"						3350	3550	5250	
									17	55'-9"						3400	3600	5450	
									18	59'-0"				27		3600	3800	6150	
									19	62'-4"						3650	3850	6400	
								AME20 DD		20	65'-7"			20	28	3900	4100	7350	
								20.1:1		21	68'-11"					4050	4250	7950	
										22	72'-2"					4100	4300	8200	
										23	75'-5"					4250	4450	8650	
										24	78'-9"					4550	4700	9750	
										25	82'-0"				35	7	5050	5200	11800
										26	85'-3"					36	5400	5600	13200
										27	88'-7"					35	5500	5700	13600
								28	91'-10"						5700	5900	14450		
								29	95'-1"				39		5950	6150	15500		
								30	98'-5"						6050	6250	15900		
1 M TON	HOIST DATA				TROLLEY DATA														
	HOIST TYPE		LIFT SPEED		LIFT CHAIN SIZE		TR SIZE & WHEEL DIA. WEIGHT		TROLLEY SPEED MOTOR TYPE & HP										
	MOTOR TYPE & HP																		
	EUDCPro 10-1000 1/1 H5 V7.2/1.8 ZNK100A8/2 0.43/1.74 HP		24/6 FPM		16 FT 7.4 x 21.2		EU11 3.2" (82mm) 132 LBS		80/20 FPM MP 56 M .03/.13 HP										
EUDCPro 10-1000 1/1 H8 V7.2/1.8 ZNK100A8/2 0.43/1.74 HP		24/6 FPM		26 FT 7.4 x 21.2		EU11 3.2" (82mm) 132 LBS		80/20 FPM MP 56 M .03/.13 HP											
EUDCCom 10-1000 1/1 H5 V4.8/1.2 ZNK100A8/2 .31/1.21 HP		16/4 FPM		16 FT 7.4 x 21.2		EU11 3.2" (82mm) 132 LBS		80/20 FPM MP 56 M .03/.13 HP											
Supercedes 900 435 49 - 2/06				Crane Product Department				Classification No. 714 IS 111											

Toprunning Single Girder Cranes
Type: EKKE with 2 - EUDC trolleys
Dimensional & Technical data

CAPACITY	HOIST/TR	ENDTRUCK		BRIDGE DRIVE				SPAN		BRIDGE DATA									
	HOIST TYPE TROLLEY TYPE QUANTITY 2	DFW-L-E		with DCPPro hoist				MAXIMUM		a1 in	a2 in	g in	u in	b in	WHEEL LOAD		SHIP WEIGHT lbs.		
		DIA.	W.B.	125/31 FPM Standard		160 VFC FPM Optional		<=							S Ton	M Ton			
		in mm	ft-in mm	GEARBOX RATIO:1	MTR TYPE HP	GEARBOX RATIO:1	MTR TYPE HP	M	FT(Ref.)						Lbs.	Lbs.			
5 M TON	DCPro 25-2500 1/1 H5 V9.6/2.4 EUDC Hook Centers hc 20" SHADED AREA WITH WF BEAM GIRDERS	4.4	6-7	AME10 DD	ZBF 71A8/2	AME10 DD	ZBA 90A4	4	13'-2"	18	18	28	18	6	4750	5200	2150		
		112	2000	35.0:1	0.14/55	17.8:1	1.5 & 2.6	5	16'-5"						5000	5450	2350		
										6	19'-8"			20		5250	5650	2700	
										7	23'-0"					5400	5850	2900	
										8	26'-3"					5550	6050	3400	
										9	29'-6"					5750	6250	3950	
										10	32'-10"					5900	6350	4250	
							ZBF 80A8/2			11	36'-1"					6000	6450	4600	
							0.21/80			12	39'-4"			27		6200	6650	5300	
										13	42'-8"					6400	6900	6000	
										14	45'-11"					6500	7000	6350	
										15	49'-2"					6800	7250	7350	
				8-3						16	52'-6"			21		7100	7600	8600	
				5	2500					17	55'-9"			23		7500	7950	10050	
				125				AME20 DD		18	59'-0"			27		8050	8500	12100	
								20.1:1						33					
		5 M TON	DCPro 25-2500 1/1 H5 V9.6/2.4 EUDC Hook Centers hc 20" WITH BOX GIRDERS	4.4	6-7	AME10 DD	ZBF 71A8/2	AME10 DD	ZBA 90A4	4	13'-2"	18	18	28	19	6	4800	5250	2350
				112	2000	35.0:1	0.14/55	17.8:1	1.5 & 2.6	5	16'-5"						5050	5500	2550
										6	19'-8"					5250	5700	2800	
										7	23'-0"					5400	5850	3000	
										8	26'-3"					5550	6000	3250	
										9	29'-6"					5650	6100	3450	
										10	32'-10"					5800	6250	3950	
							ZBF 80A8/2			11	36'-1"				23	5900	6350	4200	
							0.21/80			12	39'-4"					6000	6500	4500	
										13	42'-8"			27		6150	6600	4950	
										14	45'-11"					6250	6700	5200	
										15	49'-2"					6400	6900	5850	
										16	52'-6"					6550	7050	6350	
				8-3						17	55'-9"					6800	7250	7200	
				5	2500					18	59'-0"			31		6850	7300	7300	
				125						19	62'-4"					6900	7400	7650	
										20	65'-7"			27	32	7300	7800	9100	
								AME20 DD		21	68'-11"				35	7350	7850	9250	
								20.1:1		22	72'-2"					7600	8100	10300	
										23	75'-5"					7700	8200	10650	
										24	78'-9"					7850	8300	11050	
										25	82'-0"				39	8450	8900	13450	
				8	13-2	AME30 DD		AME30 DD		26	85'-3"				7	8850	9350	15100	
				200	4000	55.7:1		31.3:1		27	88'-7"					8950	9450	15550	
										28	91'-10"				40	9300	9800	16900	
										29	95'-1"				43	9350	9850	17100	
										30	98'-5"				44	10000	10450	19500	

* NAMEPLATE & OPERATIONAL HP SHOWN, REFER TO PAGE 30 FOR MOTOR HP DETAILS.

2.5 M TON	HOIST DATA			TROLLEY DATA	
	HOIST TYPE MOTOR TYPE & HP	LIFT SPEED	LIFT ROPE DIA.	TR SIZE & WHEEL DIA. WEIGHT	TROLLEY SPEED MOTOR TYPE & HP
	EUDCPro 25-2500 1/1 H5 V9.6/2.4 ZNK100C8/2 1.54/6.0 HP	32/8 FPM	16 FT	10.5 x 28.2	EU34 4.4" (112mm) 297 LBS
EUDCPro 25-2500 1/1 H8 V9.6/2.4 ZNK100C8/2 1.54/6.0 HP	32/8 FPM	26 FT	10.5 x 28.2	EU34 4.4" (112mm) 315 LBS	46/11.5 FPM MP 56 XL .05/.20 HP

Supercedes
900 435 49 - 2/06

Crane Product Department

Classification No.
714 IS 111

CAPACITY	HOIST/TR	ENDTRUCK		BRIDGE DRIVE				SPAN		BRIDGE DATA																				
	HOIST TYPE TROLLEY TYPE QUANTITY 2	DFW-L-E		with DCPro hoist				MAXIMUM ≤ M FT(Ref.)		a1	a2	g	u	b	WHEEL LOAD		SHIP WEIGHT													
		DIA.	W.B.	125/31 FPM Standard		160 VFC FPM Optional									S Ton	M Ton														
		in	ft-in	GEARBOX	MTR TYPE	GEARBOX	MTR TYPE	lbs.	lbs.	lbs.																				
		mm	mm	RATIO:1	HP	RATIO:1	HP			in	in	in	in	in																
6.4 M TON	DCPro 16-3200 2/1 H5 V9.6/2.4 EUDC Hook Centers hc 20" SHADED AREA WITH WF BEAM GIRDERS	4.4 112	6-7 2000	AME10 DD 35.0:1	ZBF 80A8/2 0.21/.80	AME10 DD 17.8:1	ZBA 90A4 1.5 & 2.6	4	13'-2"	18	18	31	18	6	6050	6550	2600													
								5	16'-5"						6350	6900	2900													
								6	19'-8"						6600	7150	3200													
								7	23'-0"						6800	7350	3500													
								8	26'-3"						7000	7550	4000													
								9	29'-6"						7150	7750	4300													
								10	32'-10"						7400	8000	5100													
								11	36'-1"						7650	8250	5950													
								12	39'-4"						7800	8400	6350													
								13	42'-8"						8050	8650	7250													
								14	45'-11"						8350	8950	8400													
								15	49'-2"						8500	9100	8850													
								16	52'-6"						8700	9300	9550													
								17	55'-9"						9200	9850	11550													
								18	59'-0"						9400	10000	12100													
								6.4 M TON	DCPro 16-3200 2/1 H5 V9.6/2.4 EUDC Hook Centers hc 20" WITH BOX GIRDERS						4.4 112	6-7 2000	AME10 DD 35.0:1	ZBF 80A8/2 0.21/.80	AME10 DD 17.8:1	ZBA 90A4 1.5 & 2.6	4	13'-2"	18	18	32	19	6	5950	6500	2350
																					5	16'-5"						6250	6800	2600
																					6	19'-8"						6500	7050	2800
7	23'-0"	6700	7300	3200																										
8	26'-3"	6850	7450	3450																										
9	29'-6"	7000	7600	3700																										
10	32'-10"	7200	7800	4350																										
11	36'-1"	7300	7900	4600																										
12	39'-4"	7500	8100	5150																										
13	42'-8"	7600	8200	5450																										
14	45'-11"	7700	8300	5750																										
15	49'-2"	7900	8500	6350																										
16	52'-6"	8050	8650	6900																										
17	55'-9"	8200	8800	7500																										
18	59'-0"	8400	9000	8100																										
19	62'-4"	8450	9050	8250																										
20	65'-7"	8700	9300	9250																										
21	68'-11"	8900	9500	10050																										
22	72'-2"	9100	9700	10800																										
23	75'-5"	9200	9850	11150																										
24	78'-9"	9300	9950	11550																										
25	82'-0"	10100	10700	14700																										
26	85'-3"	10450	11050	16000																										
27	88'-7"	10700	11350	17050																										
28	91'-10"	10850	11450	17550																										
29	95'-1"	11200	11850	19000																										
30	98'-5"	11600	12250	20500																										

* NAMEPLATE & OPERATIONAL HP SHOWN, REFER TO PAGE 30 FOR MOTOR HP DETAILS.

3.2 M TON	HOIST DATA			TROLLEY DATA		
	HOIST TYPE MOTOR TYPE & HP	LIFT SPEED	LIFT ROPE DIA.	TR SIZE & WHEEL DIA. WEIGHT	TROLLEY SPEED MOTOR TYPE & HP	
	EUDCPro 16-3200 2/1 H5 V4.8/1.2 ZNK100B8/2 0.87/3.62 HP	16/4 FPM	16 FT 10.5 x 28.2	EU34 4.4" (112mm) 293 LBS	46/11.5 FPM MP 56 XL .05/.20 HP	
EUDCPro 16-3200 2/1 H8 V4.8/1.2 ZNK100B8/2 0.87/3.62 HP	16/4 FPM	26 FT 10.5 x 28.2	EU34 4.4" (112mm) 318 LBS	46/11.5 FPM MP 56 XL .05/.20 HP		

Supercedes
900 435 49 - 2/06

Crane Product Department

Classification No.
714 IS 111

Toprunning Single Girder Cranes
Type: EKKE with 2 - EUDC trolleys
Dimensional & Technical data

CAPACITY	HOIST/TR	ENDTRUCK		BRIDGE DRIVE				SPAN		BRIDGE DATA																				
	HOIST TYPE TROLLEY TYPE QUANTITY 2	DFW-L-E		with DCPRO or DCCOM hoist				MAXIMUM =< M FT(Ref.)		a1	a2	g	u	b	WHEEL LOAD		SHIP WEIGHT													
		DIA.	W.B.	125/31 FPM Standard		160 VFC FPM Optional									S Ton	M Ton														
		in	ft-in	mm	mm	GEARBOX RATIO:1	MTR TYPE HP	GEARBOX RATIO:1	MTR TYPE HP	in	in	in	in	in	lbs.	lbs.	lbs.													
8 M TON	DCPro 25-4000 2/1 H5 V4.8/1.2 EUDC Hook Centers hc 22" SHADED AREA WITH WF BEAM GIRDERS	5 125	6-7 2000	AME10 DD 35.0:1	ZBF 80A8/2 0.21/80	AME20 DD 20.1:1	ZBA 90A4 1.5 & 2.6	4	13'-2"	18	18	32	19	6	7450	8100	3000													
								5	16'-5"						7850	8500	3300													
								6	19'-8"						8100	8800	3600													
								7	23'-0"						8350	9050	3900													
								8	26'-3"						8600	9300	4400													
								9	29'-6"						8800	9550	5000													
								10	32'-10"						9000	9700	5350													
								11	36'-1"						9250	10000	6200													
								12	39'-4"						9400	10150	6600													
								13	42'-8"						9650	10400	7550													
								14	45'-11"						10000	10750	8650													
								15	49'-2"						10150	10900	9100													
								8 M TON	DCPro 25-4000 2/1 H5 V4.8/1.2 EUDC Hook Centers hc 22" WITH BOX GIRDERS						5 125	6-7 2000	AME10 DD 35.0:1	ZBF 80A8/2 0.21/80	AME20 DD 20.1:1	ZBA 90A4 1.5 & 2.6	4	13'-2"	18	18	33	20	6	7400	8050	2900
																					5	16'-5"						7800	8450	3150
																					6	19'-8"						8050	8750	3400
7	23'-0"	8250	9000	3650																										
8	26'-3"	8450	9150	3900																										
9	29'-6"	8650	9400	4300																										
10	32'-10"	8800	9550	4600																										
11	36'-1"	8950	9700	5100																										
12	39'-4"	9100	9850	5400																										
13	42'-8"	9250	10000	5900																										
14	45'-11"	9400	10150	6300																										
15	49'-2"	9500	10250	6600																										
16	52'-6"	9850	10650	7950																										
17	55'-9"	10000	10750	8400																										
18	59'-0"	10100	10900	8750																										
19	62'-4"	10300	11050	9400																										
20	65'-7"	10600	11400	10650																										
21	68'-11"	10750	11500	11050																										
22	72'-2"	11000	11750	12050																										
23	75'-5"	11300	12050	13150																										
24	78'-9"	11550	12350	14250																										
25	82'-0"	12200	12950	16650																										
26	85'-3"	12250	13000	16850																										
27	88'-7"	12600	13400	18250																										
28	91'-10"	13000	13750	19700																										
29	95'-1"	13450	14200	21500																										
30	98'-5"	14100	14900	24100																										

* NAMEPLATE & OPERATIONAL HP SHOWN, REFER TO PAGE 30 FOR MOTOR HP DETAILS.

4 M TON	HOIST DATA			TROLLEY DATA	
	HOIST TYPE MOTOR TYPE & HP	LIFT SPEED	LIFT ROPE DIA.	TR SIZE & WHEEL DIA. WEIGHT	TROLLEY SPEED MOTOR TYPE & HP
	EUDCPro 25-4000 2/1 H5 V4.8/1.2 ZNK100C8/2 1.54/6.0 HP	16/4 FPM	16 FT	10.5 x 28.2	EU56 5" (125mm) 419 LBS
EUDCPro 25-4000 2/1 H8 V4.8/1.2 ZNK100C8/2 1.54/6.0 HP	16/4 FPM	26 FT	10.5 x 28.2	EU56 5" (125mm) 452 LBS	100/25 FPM ZBF71A8/2 .14/.55 HP

Supersedes
900 435 49 - 2/06

Crane Product Department

Classification No.
714 IS 111

CAPACITY	HOIST/TR	ENDTRUCK		BRIDGE DRIVE				SPAN		BRIDGE DATA									
	HOIST TYPE TROLLEY TYPE QUANTITY 2	DFW-L-E		with DCPRO or DCCOM hoist				MAXIMUM <=		a1	a2	g	u	b	WHEEL LOAD		SHIP WEIGHT		
		DIA.	W.B.	125/31 FPM Standard		160 VFC FPM Optional									M	FT(Ref.)		S Ton	M Ton
		in	ft-in	GEARBOX	MTR TYPE	GEARBOX	MTR TYPE	in	in	in	in	lbs.	lbs.	lbs.					
10 M TON	DCPro 25-5000 2/1 H5 V4.8/1.2 EUDC Hook Centers hc 22" SHADED AREA WITH WF BEAM GIRDERS	5	6-7	AMK30 DD	ZBF 90B8/2	AME20 DD	ZBA 90A4	4	13'-2"	18	18	32	21	6	9100	9950	3300		
		125	2000	36.1:1	0.32/1.3	20.1:1	1.5 & 2.6	5	16'-5"						9600	10450	3700		
		6		AME30 DD	ZBF 80A8/2			6	19'-8"				33	20	9950	10800	4050		
		160		45.5:1	0.21/.80			7	23'-0"					21	10250	11150	4500		
								8	26'-3"						21	10600	11500	5200	
								9	29'-6"							10800	11700	5600	
								10	32'-10"							11100	12000	6400	
								11	36'-1"							11400	12350	7400	
								12	39'-4"							11550	12500	7850	
								13	42'-8"							11750	12700	8350	
							ZBF 90B8/2									12200	13150	10100	
							0.32/1.3									12600	13550	11550	
										15	49'-2"								
		10 M TON	DCPro 25-5000 2/1 H5 V4.8/1.2 EUDC Hook Centers hc 22" WITH BOX GIRDERS	5	6-7	AMK30 DD	ZBF 90B8/2	AME20 DD	ZBA 90A4	4	13'-2"	18	18	33	20	6	9050	9850	3000
				125	2000	36.1:1	0.32/1.3	20.1:1	1.5 & 2.6	5	16'-5"						9500	10350	3250
6				AME30 DD	ZBF 80A8/2	AME30 DD		6	19'-8"				19		9850	10750	3600		
160				45.5:1	0.21/.80	25.3:1		7	23'-0"						10100	11000	3850		
								8	26'-3"					23		10350	11250	4300	
								9	29'-6"							10550	11450	4550	
								10	32'-10"						27	10750	11650	5050	
								11	36'-1"							10900	11800	5350	
								12	39'-4"						31	11100	12000	5900	
								13	42'-8"							11200	12150	6200	
								14	45'-11"							11400	12350	6750	
								15	49'-2"						35	11600	12550	7400	
								16	52'-6"							11850	12800	8350	
							ZBF 90B8/2									12050	13000	9000	
							0.32/1.31									12300	13300	10000	
															39	12450	13400	10400	
																12700	13650	11250	
																12950	13900	12250	
																13250	14200	13300	
																13550	14550	14500	
															43	13650	14600	14750	
																14250	15200	17200	
																14400	15350	17700	
															49	14350	15300	17350	
																14700	15650	18750	
																15400	16350	21550	
																16300	17250	25050	
																16300	17250	25050	

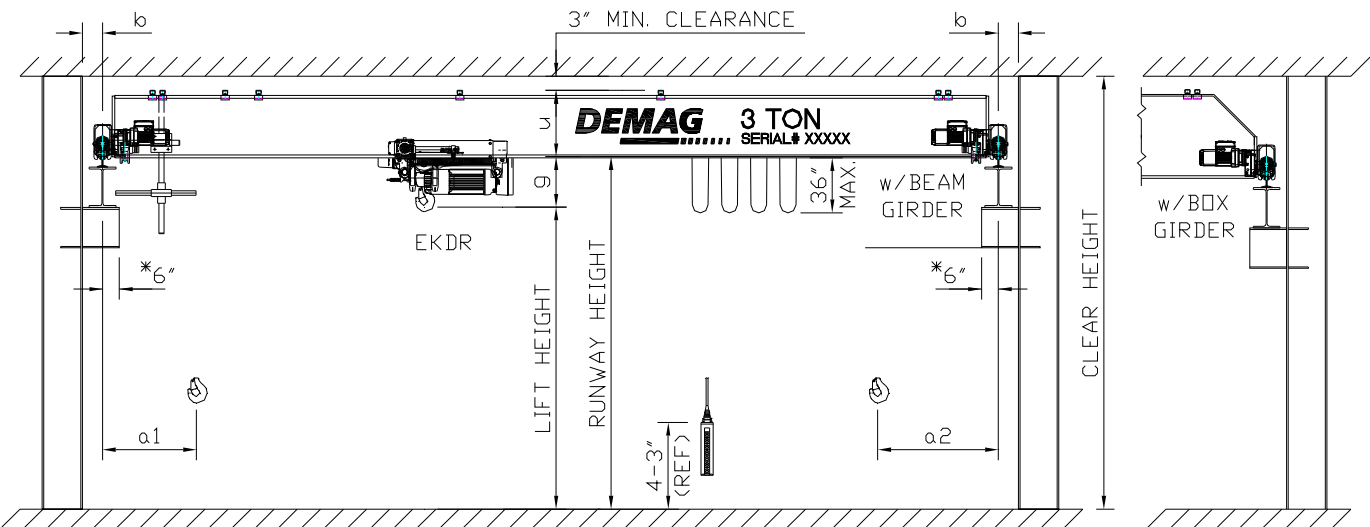
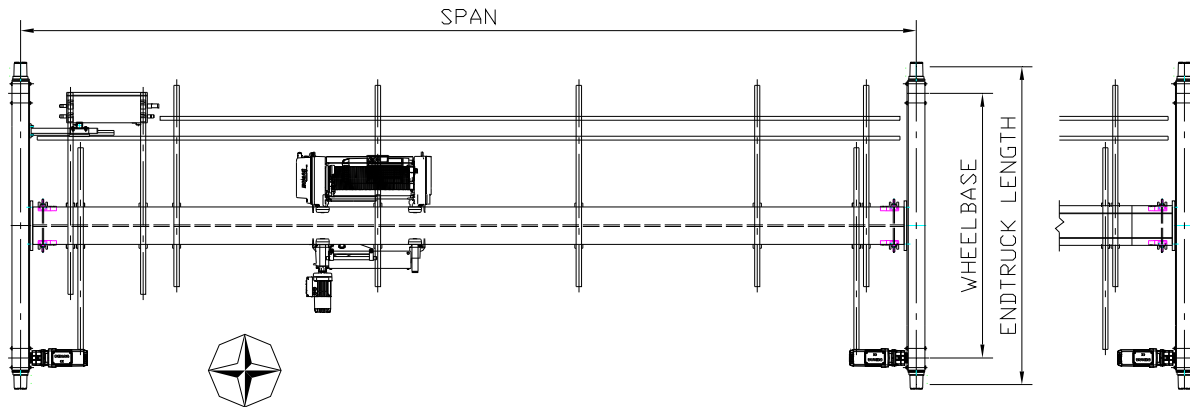
* NAMEPLATE & OPERATIONAL HP SHOWN, REFER TO PAGE 30 FOR MOTOR HP DETAILS.

5 M TON	HOIST DATA			TROLLEY DATA		
	HOIST TYPE MOTOR TYPE & HP	LIFT SPEED	LIFT ROPE DIA.	TR SIZE & WHEEL DIA. WEIGHT	TROLLEY SPEED MOTOR TYPE & HP	
	EUDCPro 25-5000 2/1 H5 V4.8/1.2 ZNK100C8/2 1.54/6.0 HP	16/4 FPM	16 FT	EU56 5" (125mm) 419 LBS	100/25 FPM ZBF71A8/2 .14/.55 HP	
EUDCPro 25-5000 2/1 H8 V4.8/1.2 ZNK100C8/2 1.54/6.0 HP	16/4 FPM	26 FT	EU56 5" (125mm) 452 LBS	100/25 FPM ZBF71A8/2 .14/.55 HP		

Supersedes
900 435 49 - 2/06

Crane Product Department

Classification No.
714 IS 111



- NOTES**
1. WHEEL LOADS ARE MAXIMUM AND DO NOT INCLUDE IMPACT.
 2. * HOOK APPROACHES WILL INCREASE IF GREATER THAN 6".

CAPACITY	HOIST/TR	ENDTRUCK		BRIDGE DRIVE				SPAN		BRIDGE DATA																				
	HOIST TYPE	DFW-L-E		Std. w/ DRCom hoist		w/ DRCom or DRPro		MAXIMUM		a1	a2	g	u	b	WHEEL LOAD		SHIP WEIGHT													
		TROLLEY TYPE	DIA.	W.B.	125/31 FPM		160 VFC FPM								<=	S Ton		M Ton												
	QUANTITY 1	in	ft-in	GEARBOX	MTR TYPE	GEARBOX	MTR TYPE	M	FT(Ref.)	in	in	in	in	in		lbs.	lbs.	lbs.												
2 M TON	DRPro 3-3.2 4/1 10 Z-6/1 or DRCom 3-3.2 4/1 10 Z-4.5/0.75 EKDR SHADED AREA WITH WF BEAM GIRDERS	4.4 112	6-7 2000	AME10 DD 35.0:1	ZBF 71A8/2 0.14/.55	AME10 DD 17.8:1	ZBA 71B4 0.5 & 0.9	4	13'-2"	28	36	19	14	6	2300	2500	1850													
								5	16'-5"						2400	2600	2000													
								6	19'-8"						2500	2650	2100													
								7	23'-0"						2550	2750	2200													
								8	26'-3"						2650	2850	2600													
								9	29'-6"						2750	2900	2750													
								10	32'-10"						2850	3050	3150													
								11	36'-1"						2900	3100	3350													
								12	39'-4"						3050	3250	3850													
								13	42'-8"						3150	3350	4300													
								14	45'-11"						3250	3450	4550													
								15	49'-2"						3550	3700	5700													
								16	52'-6"						3800	4000	6700													
								17	55'-9"						3900	4100	7050													
								18	59'-0"						4100	4300	7900													
								2 M TON	DRPro 3-3.2 4/1 10 Z-6/1 or DRCom 3-3.2 4/1 10 Z-4.5/0.75 EKDR WITH BOX GIRDERS						4.4 112	6-7 2000	AME10 DD 35.0:1	ZBF 71A8/2 0.14/.55	AME10 DD 17.8:1	ZBA 71B4 0.5 & 0.9	4	13'-2"	28	36	15	19	6	2400	2600	2250
																					5	16'-5"						2550	2700	2450
																					6	19'-8"						2650	2800	2650
7	23'-0"	2750	2950	3000																										
8	26'-3"	2800	3000	3200																										
9	29'-6"	2900	3100	3450																										
10	32'-10"	2950	3150	3650																										
11	36'-1"	3050	3250	3900																										
12	39'-4"	3100	3300	4100																										
13	42'-8"	3200	3350	4350																										
14	45'-11"	3300	3500	4850																										
15	49'-2"	3400	3600	5100																										
16	52'-6"	3500	3700	5550																										
17	55'-9"	3550	3750	5750																										
18	59'-0"	3750	3950	6400																										
19	62'-4"	3800	4000	6650																										
20	65'-7"	4050	4250	7600																										
21	68'-11"	4200	4400	8250																										
22	72'-2"	4250	4450	8450																										
23	75'-5"	4400	4600	8950																										
24	78'-9"	4650	4850	10000																										
25	82'-0"	5150	5350	12050																										
26	85'-3"	5500	5700	13500																										
27	88'-7"	5600	5800	13900																										
28	91'-10"	5850	6050	14750																										
29	95'-1"	6100	6300	15750																										
30	98'-5"	6200	6400	16200																										
2 M TON	EKDRCom 3-3.2 4/1-10 Z-4.5/0.75 ZBR100C12/2 0.9/5.5 HP	5 125	10-4 3150	AME20 DD 20.1:1	ZBA 90A4 1.5 & 2.6	20	65'-7"			37	35	7	4050	4250	7600															
						21	68'-11"						4200	4400	8250															
						22	72'-2"						4250	4450	8450															
						23	75'-5"	4400	4600				8950																	
						24	78'-9"	4650	4850				10000																	
						25	82'-0"	5150	5350				12050																	
2 M TON	EKDRCom 3-3.2 4/1-10 Z-4.5/0.75 ZBR100C12/2 0.9/5.5 HP	8 200	13-2 4000	AME30 DD 55.7:1	ZBF 80A8/2 0.21/.80	AME30 DD 31.3:1	25	82'-0"	37	17	35	5150	5350	12050																
							26	85'-3"				5500	5700	13500																
							27	88'-7"				5600	5800	13900																
							28	91'-10"				5850	6050	14750																
							29	95'-1"				6100	6300	15750																
							30	98'-5"				6200	6400	16200																

* NAMEPLATE & OPERATIONAL HP SHOWN, REFER TO PAGE 31 FOR MOTOR HP DETAILS.

2 M TON	HOIST DATA			TROLLEY DATA		
	HOIST TYPE	LIFT SPEED	LIFT ROPE DIA.	WHEEL DIA. WEIGHT	TROLLEY SPEED	MOTOR TYPE & HP
	EKDRPro 3-3.2 4/1-10 Z-6/1 ZBR100C12/2 0.9/5.5 HP	24/4 FPM	32 FT	4" (100mm) 607 LBS	100 VFC FPM ZBA71B4 0.5 & 0.9 HP*	
EKDRCom 3-3.2 4/1-10 Z-4.5/0.75 ZBR100C12/2 0.9/5.5 HP	18/3 FPM	32 FT	4" (100mm) 607 LBS	80/20 FPM ZBF71A8/2 .14/.55 HP		

Toprunning Single Girder Cranes
Type: EKKE with 1 - EKDR trolley
Dimensional & Technical data

CAPACITY	HOIST/TR	ENDTRUCK		BRIDGE DRIVE				SPAN		BRIDGE DATA																						
	HOIST TYPE TROLLEY TYPE QUANTITY 1	DFW-L-E		Std. w/ DRCom hoist 125/31 FPM		w/ DRCom or DRPro 160 VFC FPM		MAXIMUM =<=		a1	a2	g	u	b	WHEEL LOAD		SHIP WEIGHT															
		DIA.	W.B.	GEARBOX RATIO:1	MTR TYPE HP	GEARBOX RATIO:1	MTR TYPE HP*								S Ton	M Ton																
		in mm	ft-in mm					lbs.	lbs.	lbs.																						
3.2 M TON	DRPro 3-3.2 4/1 10 Z-6/1 or DRCom 3-3.2 4/1 10 Z-4.5/0.75 EKDR SHADED AREA WITH WF BEAM GIRDERS	4.4 112	6-7 2000	AME10 DD 35.0:1	ZBF 71A8/2 0.14/55	AME10 DD 17.8:1	ZBA 71B4 0.5 & 0.9	4	13'-2"	28	36	19	15	6	3400	3650	2000															
															3500	3800	2200															
															3650	3900	2350															
															3750	4050	2600															
															3850	4150	2800															
															3950	4250	3200															
															4100	4400	3650															
															4200	4500	3900															
															4350	4650	4450															
															4500	4800	5100															
															4600	4900	5400															
															4800	5150	6200															
															5150	5450	7450															
															5400	5700	8400															
															5650	5950	9400															
															3.2 M TON	DRPro 3-3.2 4/1 10 Z-6/1 or DRCom 3-3.2 4/1 10 Z-4.5/0.75 EKDR WITH BOX GIRDERS	4.4 112	6-7 2000	AME10 DD 35.0:1	ZBF 71A8/2 0.14/55	AME10 DD 17.8:1	ZBA 71B4 0.5 & 0.9	4	13'-2"	28	36	15	19	6	3450	3700	2300
																														3600	3900	2550
																														3750	4000	2750
3850	4150	3000																														
3950	4250	3200																														
4000	4300	3450																														
4100	4400	3650																														
4250	4550	4150																														
4350	4650	4400																														
4450	4750	4850																														
4550	4850	5200																														
4650	4950	5500																														
4750	5050	5900																														
4900	5200	6450																														
5000	5300	6850																														
5100	5400	7150																														
5400	5700	8300																														
5500	5800	8750																														
5600	5900	9050																														
5850	6150	10100																														
5950	6250	10450																														
5 125	10-4 3150	ZBF 80A8/2 0.21/80	AME20 DD 20.1:1	20	65'-7"	15	28	5400	5700	8300																						
								5500	5800	8750																						
								5600	5900	9050																						
								5850	6150	10100																						
								5950	6250	10450																						
								6550	6850	12850																						
8 200	13-2 4000	AME30 DD 55.7:1	AME30 DD 31.3:1	ZBA 90A4 1.5 & 2.6	25	82'-0"	37	35	7	6550	6850	12850																				
										6800	7100	13950																				
										7050	7350	14950																				
										7400	7700	16300																				
										7450	7750	16400																				
										7550	7850	16850																				

* NAMEPLATE & OPERATIONAL HP SHOWN, REFER TO PAGE 31 FOR MOTOR HP DETAILS.

3.2 M TON	HOIST DATA			TROLLEY DATA		
	HOIST TYPE MOTOR TYPE & HP	LIFT SPEED	LIFT ROPE DIA.	WHEEL DIA. WEIGHT	TROLLEY SPEED MOTOR TYPE & HP	
	EKDRPro 3-3.2 4/1-10 Z-6/1 ZBR100C12/2 0.9/5.5 HP	24/4 FPM	32 FT 7mm	4" (100mm) 607 LBS	100 VFC FPM ZBA71B4 0.5 & 0.9 HP*	
EKDRCom 3-3.2 4/1-10 Z-4.5/0.75 ZBR100C12/2 0.9/5.5 HP	18/3 FPM	32 FT 7mm	4" (100mm) 607 LBS	80/20 FPM ZBF71A8/2 .14/55 HP		

Supersedes
900 435 49 - 2/06

Crane Product Department

Classification No.
714 IS 111

CAPACITY	HOIST/TR	ENDTRUCK		BRIDGE DRIVE				SPAN		BRIDGE DATA																								
	HOIST TYPE	DFW-L-E		Std. w/ DRCom hoist		w/ DRCom or DRPro		MAXIMUM		a1	a2	g	u	b	WHEEL LOAD		SHIP WEIGHT																	
		TROLLEY TYPE	DIA.	W.B.	125/31 FPM		160 VFC FPM								<=	S Ton		M Ton																
	QUANTITY 1	in	ft-in	GEARBOX	MTR TYPE	GEARBOX	MTR TYPE	M	FT(Ref.)	in	in	in	in	in			lbs.		lbs.	lbs.														
5 M TON	DRPro 5-5 4/1 10 Z-6/1 or DRCom 5-5 4/1 10 Z-4.5/0.75 EKDR SHADED AREA WITH WF BEAM GIRDERS	4.4 112	6-7 2000	AME10 DD 35.0:1	ZBF 71A8/2 0.14/.55	AME10 DD 17.8:1	ZBA 90A4 1.5 & 2.6	4	13'-2"	29	36	21	18	6	5000	5450	2450																	
															5	16'-5"	5250	5700	2650															
															6	19'-8"	5450	5900	2950															
															7	23'-0"	5550	6050	3200															
															8	26'-3"	5750	6200	3700															
															9	29'-6"	5950	6400	4250															
															10	32'-10"	6050	6500	4550															
															11	36'-1"	6150	6650	4800															
															12	39'-4"	6350	6850	5550															
															13	42'-8"	6550	7050	6250															
															14	45'-11"	6650	7150	6600															
															15	49'-2"	6950	7400	7600															
															16	52'-6"	7250	7750	8850															
															17	55'-9"	7650	8100	10250															
															18	59'-0"	8150	8650	12350															
															5 M TON	DRPro 5-5 4/1 10 Z-6/1 or DRCom 5-5 4/1 10 Z-4.5/0.75 EKDR WITH BOX GIRDERS	4.4 112	6-7 2000	AME10 DD 35.0:1	ZBF 71A8/2 0.14/.55	AME10 DD 17.8:1	ZBA 90A4 1.5 & 2.6	4	13'-2"	29	36	17	19	6	5050	5500	2600		
																														5	16'-5"	5300	5750	2850
																														6	19'-8"	5450	5900	3050
7	23'-0"	5600	6050	3300																														
8	26'-3"	5700	6150	3500																														
9	29'-6"	5800	6300	3750																														
10	32'-10"	5950	6450	4200																														
11	36'-1"	6050	6550	4400																														
12	39'-4"	6150	6650	4750																														
13	42'-8"	6300	6750	5200																														
14	45'-11"	6400	6850	5450																														
15	49'-2"	6550	7050	6100																														
16	52'-6"	6700	7150	6550																														
17	55'-9"	6900	7400	7400																														
18	59'-0"	6950	7450	7550																														
19	62'-4"	7050	7550	7850																														
20	65'-7"	7450	7900	9350																														
21	68'-11"	7450	7950	9450																														
22	72'-2"	7750	8250	10500																														
23	75'-5"	7850	8350	10900																														
24	78'-9"	7950	8450	11250																														
25	82'-0"	8550	9050	13700																														
26	85'-3"	8950	9450	15350																														
27	88'-7"	9100	9550	15750																														
28	91'-10"	9450	9900	17100																														
29	95'-1"	9450	9950	17300																														
30	98'-5"	10100	10600	19700																														

* NAMEPLATE & OPERATIONAL HP SHOWN, REFER TO PAGE 31 FOR MOTOR HP DETAILS.

5 M TON	HOIST DATA			TROLLEY DATA		
	HOIST TYPE	LIFT SPEED	LIFT ROPE DIA.	WHEEL DIA. WEIGHT	TROLLEY SPEED	MOTOR TYPE & HP
	EKDRPro 5-5 4/1-10 Z-6/1 ZBR100D12/2 1.3/8.6 HP	24/4 FPM	32 FT	5" (125mm) 860 LBS	100 VFC FPM ZBA71B4 0.5 & 0.9 HP*	
EKDRCom 5-5 4/1-10 Z-4.5/0.75 ZBR100D12/2 1.3/8.6 HP	18/3 FPM	32 FT	5" (125mm) 860 LBS	80/20 FPM ZBF71A8/2 .14/.55 HP		

Supersedes
900 435 49 - 2/06

Crane Product Department

Classification No.
714 IS 111

Toprunning Single Girder Cranes
Type: EKKE with 1 - EKDR trolley
Dimensional & Technical data

CAPACITY	HOIST/TR	ENDTRUCK		BRIDGE DRIVE				SPAN		BRIDGE DATA																						
	HOIST TYPE TROLLEY TYPE QUANTITY 1	DFW-L-E		Std. w/ DRCom hoist 125/31 FPM		w/ DRCom or DRPro 160 VFC FPM		MAXIMUM =<=		a1	a2	g	u	b	WHEEL LOAD		SHIP WEIGHT															
		DIA.	W.B.	GEARBOX RATIO:1	MTR TYPE HP	GEARBOX RATIO:1	MTR TYPE HP*								S Ton	M Ton																
		in mm	ft-in mm					lbs.	lbs.	lbs.																						
8 M TON	DRPro 10-10 4/1 10 Z-6/1 or DRCom 10-10 4/1 10 Z-4.0/0.67 EKDR SHADED AREA WITH WF BEAM GIRDERS	5.0 125	6-7 2000	AME10 DD 35.0:1	ZBF 80A8/2 0.21/.80	AME20 DD 20.1:1	ZBA 90A4 1.5 & 2.6	4	13'-2"	32	40	20	19	6	7900	8550	3650															
															8250	8950	4050															
															8600	9300	4550															
															8800	9550	4900															
															9100	9850	5600															
															9250	10000	6000															
															9450	10200	6400															
															9600	10350	6800															
															9850	10600	7700															
															10150	10950	8750															
															10300	11100	9250															
															10800	11600	11250															
															160	AME30 DD	AME30 DD	AME30 DD	15	49'-2"	33	41	26	32								
															8 M TON	DRPro 10-10 4/1 10 Z-6/1 or DRCom 10-10 4/1 10 Z-4.0/0.67 EKDR WITH BOX GIRDERS	5 125	6-7 2000	AME10 DD 35.0:1	ZBF 80A8/2 0.21/.80	AME20 DD 20.1:1	ZBA 90A4 1.5 & 2.6	4	13'-2"	32	40	22	20	6	7850	8500	3500
																														8200	8900	3750
8450	9150	4000																														
8650	9400	4250																														
8800	9550	4500																														
9000	9750	4950																														
9150	9900	5200																														
9300	10100	5750																														
9450	10200	6050																														
9600	10350	6550																														
9750	10500	6900																														
9850	10600	7200																														
10200	10950	8550																														
10300	11100	9000																														
10400	11200	9350																														
10600	11400	10000																														
10950	11700	11250																														
11050	11800	11600																														
11300	12050	12600																														
11600	12350	13650																														
11850	12650	14750																														
12500	13250	17150																														
12550	13300	17350																														
12900	13700	18750																														
13250	14050	20200																														
13750	14500	22050																														
14400	15150	24600																														
6 160	8-3 2500	AME30 DD 45.5:1		AME30 DD 25.3:1		AME30 DD 31.3:1		16	52'-6"	33	41	31	35	10200			10950	8550														
								17	55'-9"					10300			11100	9000														
								18	59'-0"					10400			11200	9350														
								19	62'-4"					10600	11400	10000																
								20	65'-7"			39		10950	11700	11250																
								21	68'-11"					11050	11800	11600																
								22	72'-2"					11300	12050	12600																
					ZBF 90B8/2 0.32/1.3			23	75'-5"			26		11600	12350	13650																
								24	78'-9"					11850	12650	14750																
								25	82'-0"				40	7	12500	13250	17150															
								26	85'-3"				43		12550	13300	17350															
								27	88'-7"				44		12900	13700	18750															
								28	91'-10"					13250	14050	20200																
								29	95'-1"					13750	14500	22050																
								30	98'-5"					14400	15150	24600																

* NAMEPLATE & OPERATIONAL HP SHOWN, REFER TO PAGE 31 FOR MOTOR HP DETAILS.

8 M TON	HOIST DATA			TROLLEY DATA		
	HOIST TYPE MOTOR TYPE & HP	LIFT SPEED	LIFT ROPE DIA.	WHEEL DIA. WEIGHT	TROLLEY SPEED MOTOR TYPE & HP	
	EKDRPro 10-10 4/1-10 Z-5/0.8 ZBR132D12/2 2.3/14.3 HP	20/3.3 FPM	32 FT 13mm	6" (160mm) 1475 LBS	100 VFC FPM ZBA71B4 0.5 & 0.9 HP*	
EKDRCom 10-10 4/1-10 Z-4/0.67 ZBR132D12/2 2.3/14.3 HP	16/2.7 FPM	32 FT 13mm	6" (160mm) 1525 LBS	80/20 FPM ZBF80A8/2 .21/.80 HP		

Supersedes
900 435 49 - 2/06

Crane Product Department

Classification No.
714 IS 111

CAPACITY	HOIST/TR	ENDTRUCK		BRIDGE DRIVE				SPAN		BRIDGE DATA									
	HOIST TYPE	DFW-L-E		Std. w/ DRCom hoist		w/ DRCom or DRPro		MAXIMUM =< M FT(Ref.)		a1	a2	g	u	b	WHEEL LOAD		SHIP WEIGHT		
		TROLLEY TYPE	DIA.	W.B.	125/31 FPM		160 VFC FPM								S Ton	M Ton			
	QUANTITY 1	in	ft-in	GEARBOX	MTR TYPE	GEARBOX	MTR TYPE	in	in	in	in	in	lbs.	lbs.	lbs.				
	mm	mm	RATIO:1	HP	RATIO:1	HP*													
10 M TON	DRPro 10-10 4/1 10 Z-6/1 or DRCom 10-10 4/1 10 Z-4.0/0.67 EKDR SHADED AREA WITH WF BEAM GIRDERS	5	6-7	AMK30 DD	ZBF 90B8/2	AME20 DD	ZBA 90A4	4	13'-2"	32	40	20	21	6	9600	10450	3850		
		125	2000	36.1:1	0.32/1.3	20.1:1	1.5 & 2.6	5	16'-5"						10050	10900	4200		
		6		AME30 DD	ZBF 80A8/2	AME30 DD		6	19'-8"	33	41	21	20		10350	11250	4800		
		160		45.5:1	0.21/.80	25.3:1		7	23'-0"						10650	11550	5150		
								8	26'-3"				21		10950	11850	5850		
								9	29'-6"						11150	12050	6200		
								10	32'-10"			22	23		11450	12350	7050		
								11	36'-1"				24		11750	12700	8000		
						ZBF 90B8/2	0.21/.80						23	26	11900	12850	8450		
															12100	13050	8950		
												26	32		12550	13500	10650		
															12950	13900	12100		
		10 M TON	DRPro 10-10 4/1 10 Z-6/1 or DRCom 10-10 4/1 10 Z-4.0/0.67 EKDR WITH BOX GIRDERS	5	6-7	AMK30 DD	ZBF 90B8/2	AME20 DD	ZBA 90A4	4	13'-2"	32	40	22	20	6	9550	10350	3500
				125	2000	36.1:1	0.32/1.3	20.1:1	1.5 & 2.6	5	16'-5"						9950	10800	3750
6				AME30 DD	ZBF 80A8/2	AME30 DD		6	19'-8"	33	41		19		10250	11100	4250		
160				45.5:1	0.21/.80	25.3:1		7	23'-0"				23		10500	11400	4650		
								8	26'-3"						10700	11650	4900		
								9	29'-6"					27		10950	11850	5350	
								10	32'-10"							11100	12000	5650	
								11	36'-1"					31		11300	12200	6200	
								12	39'-4"							11450	12400	6700	
						ZBF 90B8/2	0.21/.80									11700	12650	7450	
																11850	12800	7800	
																12050	13000	8450	
														35		12300	13250	9450	
																12450	13400	9850	
																12700	13650	10750	
															39	12900	13900	11550	
																13150	14100	12450	
																13300	14250	12900	
																13550	14550	13950	
														26		13950	14900	15300	
																14250	15250	16600	
															44	7	14850	15800	18800
																	15000	15950	19350
																	15350	16350	20800
																	15500	16500	21400
															50		15900	16900	22950
																	16100	17050	23600

* NAMEPLATE & OPERATIONAL HP SHOWN, REFER TO PAGE 31 FOR MOTOR HP DETAILS.

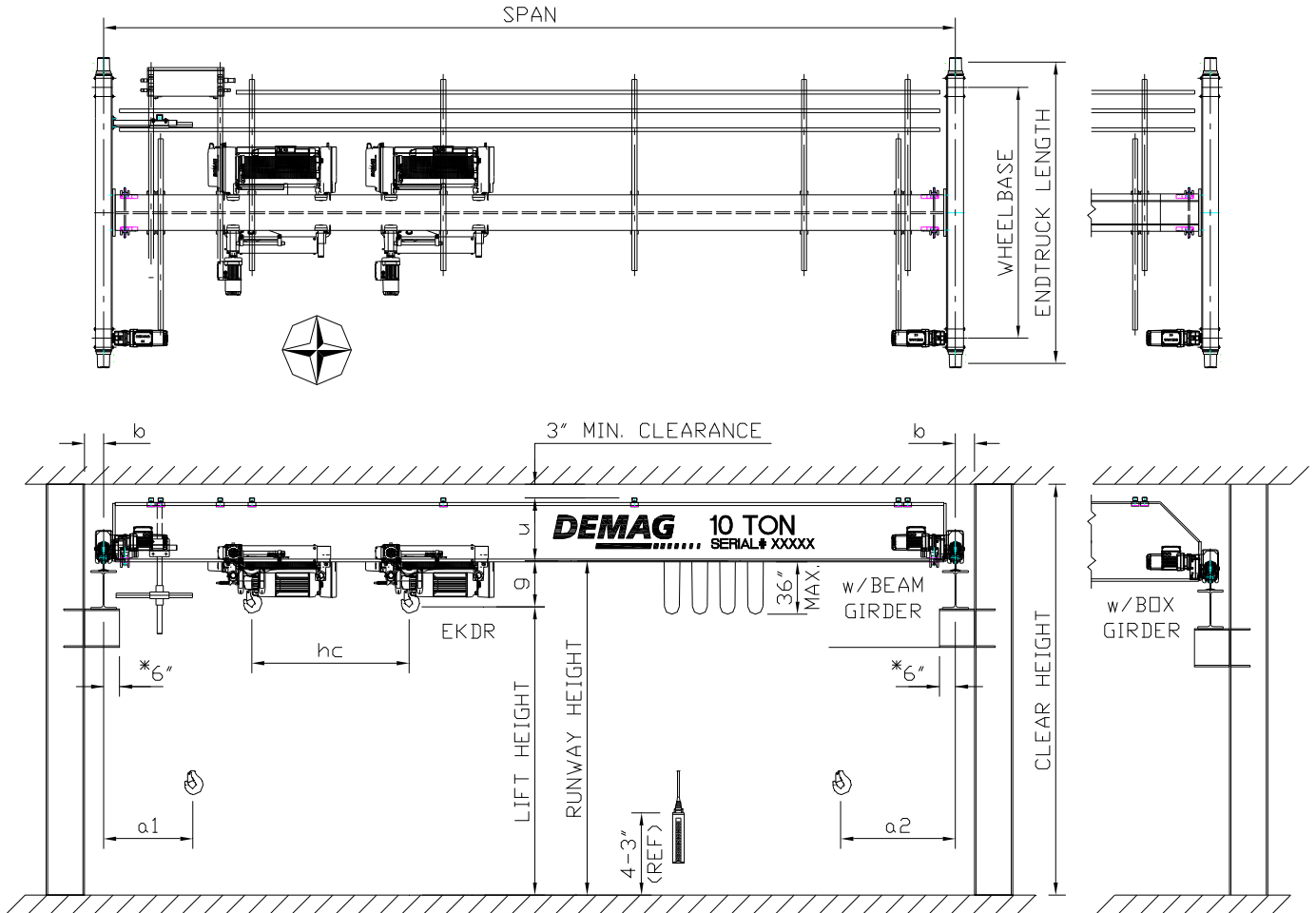
10 M TON	HOIST DATA			TROLLEY DATA		
	HOIST TYPE	LIFT SPEED	LIFT ROPE DIA.	WHEEL DIA. WEIGHT	TROLLEY SPEED	MOTOR TYPE & HP
	MOTOR TYPE & HP					
	EKDRPro 10-10 4/1-10 Z-5/0.8 ZBR132D12/2 2.3/14.3 HP	20/3.3 FPM	32 FT 13mm	6" (160mm) 1475 LBS	100 VFC FPM	ZBA71B4 0.5 & 0.9 HP*
	EKDRCom 10-10 4/1-10 Z-4/0.67 ZBR132D12/2 2.3/14.3 HP	16/2.7 FPM	32 FT 13mm	6" (160mm) 1525 LBS	80/20 FPM	ZBF80A8/2 .21/.80 HP

Toprunning Single Girder Cranes
Type: EKKE with 1 - EKDR trolley
Dimensional & Technical data

CAPACITY	HOIST/TR	ENDTRUCK		BRIDGE DRIVE				SPAN		BRIDGE DATA								
	HOIST TYPE	DFW-L-E		Std. w/ DRCom hoist 125/31 FPM		w/ DRCom or DRPro 160 VFC FPM		MAXIMUM =<		a1	a2	g	u	b	WHEEL LOAD		SHIP WEIGHT	
		TROLLEY TYPE	DIA. in	W.B. ft-in	GEARBOX	MTR TYPE	GEARBOX								MTR TYPE	S Ton		M Ton
	QUANTITY 1	mm	mm	RATIO:1	HP	RATIO:1	HP*	M	FT(Ref.)	in	in	in	in	in	lbs.	lbs.	lbs.	
12.5 M TON	DRPro10-12.5 4/1 10 Z-4.0/0.67 or DRCom10-12.5 4/1 10 Z-4.0/0.67 EKDR WITH BOX GIRDERS	6	6-7	AME30 DD	ZBF 90B8/2	AME30 DD	ZBA 90A4	4	13'-2"	33	41	22	23	6	11700	12750	4150	
		160	2000	45.5:1	0.32/1.3	25.3:1	1.5 & 2.6	5	16'-5"						12250	13300	4550	
								6	19'-8"							12650	13750	4900
								7	23'-0"							12950	14050	5300
								8	26'-3"							13200	14350	5650
								9	29'-6"					28	7	13600	14750	6750
						AME40 DD		AME30 DD		10	32'-10"					13800	14950	7150
						55.7:1		31.3:1		11	36'-1"					14000	15150	7550
										12	39'-4"				32	14250	15400	8300
										13	42'-8"					14400	15600	8700
										14	45'-11"				36	14650	15850	9550
										15	49'-2"					14800	16000	10000
			8-3	2500					16	52'-6"					15100	16300	11100	
									17	55'-9"				40	15350	16550	11750	
									18	59'-0"					15550	16750	12550	
							AME40 DD		19	62'-4"					16000	17250	14300	
							31.1:1		20	65'-7"			26	44	16700	17900	16850	
									21	68'-11"					16850	18050	17500	
									22	72'-2"					17050	18250	18150	
									23	75'-5"					17250	18450	18800	
									24	78'-9"					17400	18600	19450	

* NAMEPLATE & OPERATIONAL HP SHOWN, REFER TO PAGE 31 FOR MOTOR HP DETAILS.

12.5 M TON	HOIST DATA			TROLLEY DATA		
	HOIST TYPE	LIFT SPEED	LIFT ROPE DIA.	WHEEL DIA. WEIGHT	TROLLEY SPEED	MOTOR TYPE & HP
	MOTOR TYPE & HP				MOTOR TYPE & HP	
	EKDRPro 10-12.5 4/1-10 Z-4/0.67 ZBR132D12/2 2.3/14.3 HP	16/2.7 FPM	32 FT 13mm	6" (160mm) 1475 LBS	100 VFC FPM	ZBA71B4 0.5 & 0.9 HP*
	EKDRCom 10-12.5 4/1-10 Z-4/0.67 ZBR132D12/2 2.3/14.3 HP	16/2.7 FPM	32 FT 13mm	6" (160mm) 1525 LBS	80/20 FPM	ZBF80A8/2 .21/.80 HP



NOTES FOR CRANES WITH SIMULTANEOUS & INDEPENDANT CONTROL

1. FOR OPERATION WITH 2 IDENTICAL HOIST TROLLEY UNITS
2. SELECTOR SWITCH FOR OPERATION OF HOIST 1, 2 OR BOTH
3. REFER TO PAGE ONE FOR STANDARD CRANE FEATURES
4. WHEEL LOADS ARE MAXIMUM AND DO NOT INCLUDE IMPACT.
5. * HOOK APPROACHES WILL INCREASE IF GREATER THAN 6".

Toprunning Single Girder Cranes
Type: EKKE with 2 - EKDR trolleys
Dimensional & Technical data

CAPACITY	HOIST/TR	ENDTRUCK		BRIDGE DRIVE				SPAN		BRIDGE DATA									
	HOIST TYPE TROLLEY TYPE QUANTITY 2	DFW-L-E		Std. w/ DRCom hoist 125/31 FPM		w/ DRCom or DRPro 160 VFC FPM		MAXIMUM =< M FT(Ref.)		a1	a2	g	u	b	WHEEL LOAD		SHIP WEIGHT		
		DIA.	W.B.	GEARBOX RATIO:1	MTR TYPE HP	GEARBOX RATIO:1	MTR TYPE HP*								S Ton	M Ton			
		in mm	ft-in mm					lbs.	lbs.	lbs.									
6.4 M TON	DRPro 3-3.2 4/1 10 Z-6/1 or DRCom 3-3.2 4/1 10 Z-4.5/0.75 Hook Centers hc 46" SHADED AREA WITH WF BEAM GIRDERS	4.4	6-7	AME10 DD	ZBF 80A8/2	AME10 DD	ZBA 90A4	4	13'-2"	28	36	16	18	6	6500	7050	3200		
		112	2000	35.0:1	0.21/80	17.8:1	1.5 & 2.6	5	16'-5"						6800	7350	3500		
		5				AME20 DD		6	19'-8"						7000	7600	3800		
		125				20.1:1		7	23'-0"			15	19		7250	7800	4300		
								8	26'-3"			14	21		7450	8050	4800		
								9	29'-6"						7650	8250	5400		
								10	32'-10"						7800	8400	5750		
								11	36'-1"						8050	8650	6550		
								12	39'-4"						8150	8750	6950		
								13	42'-8"			15	24		8400	9050	7900		
								14	45'-11"						8750	9350	9050		
								15	49'-2"				27		8850	9500	9500		
				8-3				16	52'-6"						9050	9700	10200		
				2500				17	55'-9"				17	33		9550	10200	12150	
								18	59'-0"						9750	10350	12750		
		6.4 M TON	DRPro 3-3.2 4/1 10 Z-6/1 or DRCom 3-3.2 4/1 10 Z-4.5/0.75 EKDR Hook Centers hc 46" WITH BOX GIRDERS	4.4	6-7	AME10 DD	ZBF 80A8/2	AME10 DD	ZBA 90A4	4	13'-2"	28	36	15	19	6	6450	7000	3000
				112	2000	35.0:1	0.21/80	17.8:1	1.5 & 2.6	5	16'-5"						6750	7300	3200
				5				AME20 DD		6	19'-8"						6950	7500	3450
125						20.1:1		7	23'-0"				20		7150	7750	4000		
								8	26'-3"						7300	7900	4250		
								9	29'-6"						7450	8050	4550		
								10	32'-10"					24	7600	8200	5000		
								11	36'-1"						7700	8300	5250		
								12	39'-4"					28	7850	8500	5800		
								13	42'-8"						7950	8600	6100		
								14	45'-11"						8050	8700	6400		
								15	49'-2"					32	8250	8850	7000		
				8-3				16	52'-6"						8400	9000	7550		
				2500				17	55'-9"						8550	9200	8150		
								18	59'-0"						8750	9350	8750		
								19	62'-4"					35	8800	9400	8900		
								20	65'-7"					36	9050	9650	9850		
								21	68'-11"					39	9250	9900	10650		
								22	72'-2"						9450	10050	11400		
								23	75'-5"						9550	10200	11800		
								24	78'-9"						9650	10300	12200		
				8	13-2	AME30 DD	ZBF 90B8/2	AME30 DD		25	82'-0"		37	17	7	10450	11050	15350	
				200	4000	55.7:1	0.32/1.3	31.3:1		26	85'-3"				40	10800	11400	16600	
										27	88'-7"				43	11050	11700	17650	
										28	91'-10"					11200	11800	18200	
										29	95'-1"				44	11550	12200	19650	
										30	98'-5"					11950	12550	21150	

* NAMEPLATE & OPERATIONAL HP SHOWN, REFER TO PAGE 31 FOR MOTOR HP DETAILS.

3.2 M TON	HOIST DATA			TROLLEY DATA		
	HOIST TYPE MOTOR TYPE & HP	LIFT SPEED	LIFT ROPE DIA.	WHEEL DIA. WEIGHT	TROLLEY SPEED MOTOR TYPE & HP	
	EKDRPro 3-3.2 4/1-10 Z-6/1 ZBR100C12/2 0.9/5.5 HP	24/4 FPM	32 FT	4" (100mm) 607 LBS	100 VFC FPM ZBA71B4 0.5 & 0.9 HP*	
EKDRCom 3-3.2 4/1-10 Z-4.5/0.75 ZBR100C12/2 0.9/5.5 HP	18/3 FPM	32 FT	4" (100mm) 607 LBS	80/20 FPM ZBF71A8/2 .14/.55 HP		

Supersedes
900 435 49 - 2/06

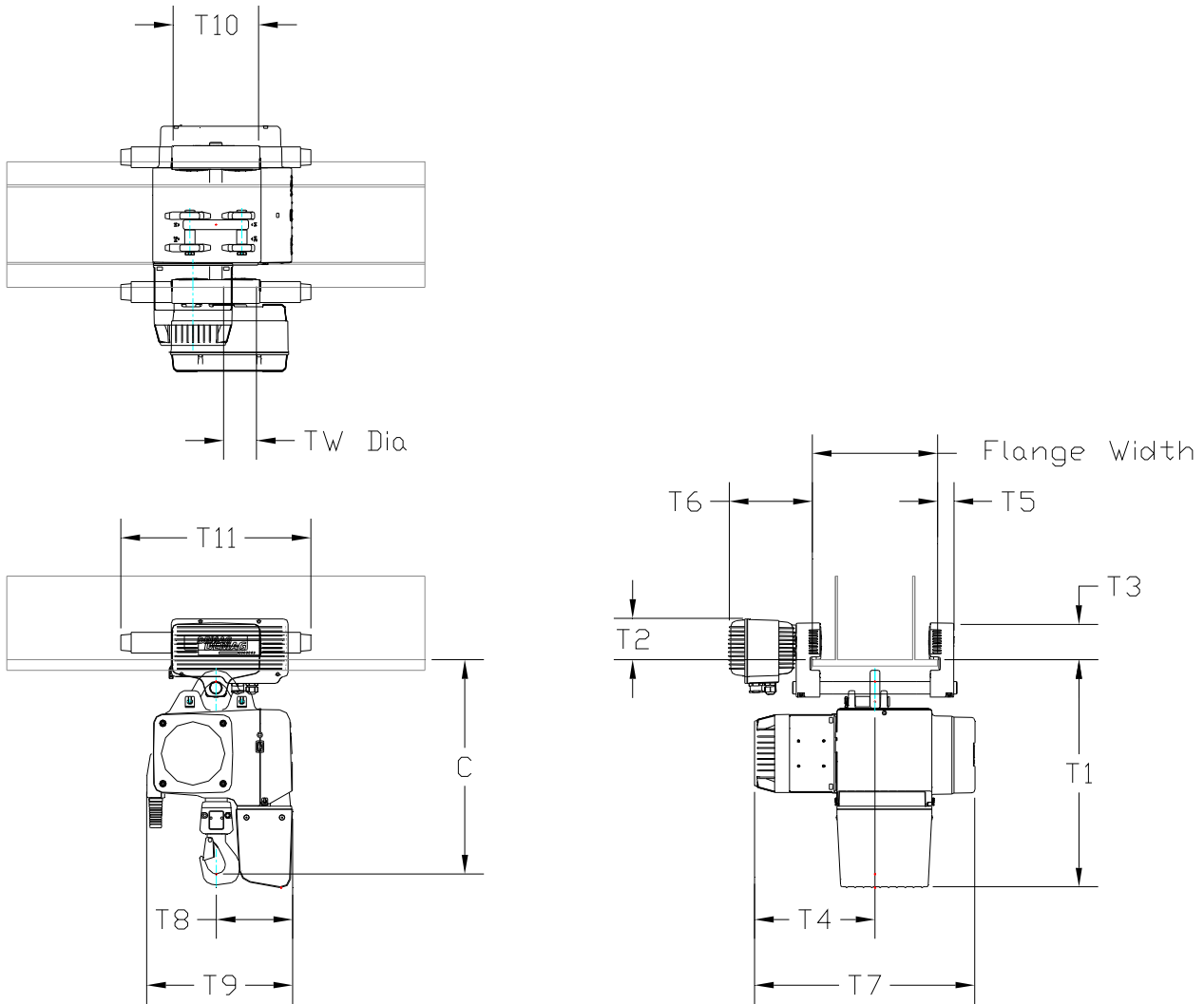
Crane Product Department

Classification No.
714 IS 111

CAPACITY	HOIST/TR	ENDTRUCK		BRIDGE DRIVE				SPAN		BRIDGE DATA													
	HOIST TYPE	DFW-L-E		Std. w/ DRCom hoist		w/ DRCom or DRPro		MAXIMUM =<		a1	a2	g	u	b	WHEEL LOAD		SHIP WEIGHT						
		TROLLEY TYPE	DIA.	W.B.	125/31 FPM		160 VFC FPM								S Ton	M Ton							
	QUANTITY 2	in	ft-in	GEARBOX	MTR TYPE	GEARBOX	MTR TYPE	M	FT(Ref.)	in	in	in	in	in	lbs.	lbs.	lbs.						
	mm	mm	RATIO:1	HP	RATIO:1	HP*																	
10 M TON	DRPro 5-5 4/1 10 Z-6/1 or DRCom 5-5 4/1 10 Z-4.5/0.75 SHADED AREA WITH WF BEAM GIRDERS	6	6-7	AME30 DD	ZBF 80A8/2	AME30 DD	ZBA 90A4	4	13'-2"	30	37	17	20	6	9900	10750	4350						
		160	2000	45.5:1	0.21/.80	25.3:1	1.5 & 2.6	5	16'-5"						10300	11200	4700						
								6	19'-8"						10600	11500	5050						
								7	23'-0"						10850	11800	5400						
								8	26'-3"						11150	12100	6100						
								9	29'-6"						11350	12300	6500						
								10	32'-10"						11650	12550	7300						
								11	36'-1"						11950	12900	8300						
					ZBF 90B8/2			12	39'-4"						12100	13050	8750						
					0.21/.80			13	42'-8"						12250	13250	9250						
								14	45'-11"						12750	13700	10950						
								15	49'-2"						13150	14100	12400						
		10 M TON	DRPro 5-5 4/1 10 Z-6/1 or DRCom 5-5 4/1 10 Z-4.5/0.75 EKDR Hook Centers hc 47" WITH BOX GIRDERS	5	6-7	AMK30 DD	ZBF 90B8/2	AME20 DD	ZBA 90A4						4	13'-2"	29	36	17	20	6	9800	10650
125	2000			36.1:1	0.32/1.3	20.1:1	1.5 & 2.6	5	16'-5"	10150	11050	4050											
6				AME30 DD	ZBF 80A8/2	AME30 DD		6	19'-8"	10500	11400	4500											
160				45.5:1	0.21/.80	25.3:1		7	23'-0"	10700	11600	4750											
								8	26'-3"	10950	11850	5200											
								9	29'-6"	11100	12050	5450											
								10	32'-10"	11300	12250	5950											
								11	36'-1"	11450	12350	6250											
								12	39'-4"	11600	12550	6800											
								13	42'-8"	11750	12700	7100											
					ZBF 90B8/2			14	45'-11"	11900	12850	7650											
					0.21/.80			15	49'-2"	12100	13050	8300											
								16	52'-6"	12350	13350	9200											
								17	55'-9"	12550	13500	9850											
								18	59'-0"	12800	13800	10800											
								19	62'-4"	12950	13900	11250											
								20	65'-7"	13200	14150	12100											
								21	68'-11"	13450	14400	13050											
								22	72'-2"	13750	14700	14150											
								23	75'-5"	14050	15000	15350											
								24	78'-9"	14150	15100	15600											
								25	82'-0"	14750	15700	18000											
								26	85'-3"	14900	15850	18550											
								27	88'-7"	14800	15800	18200											
								28	91'-10"	15150	16150	19600											
								29	95'-1"	15850	16850	22350											
								30	98'-5"	16750	17750	25900											

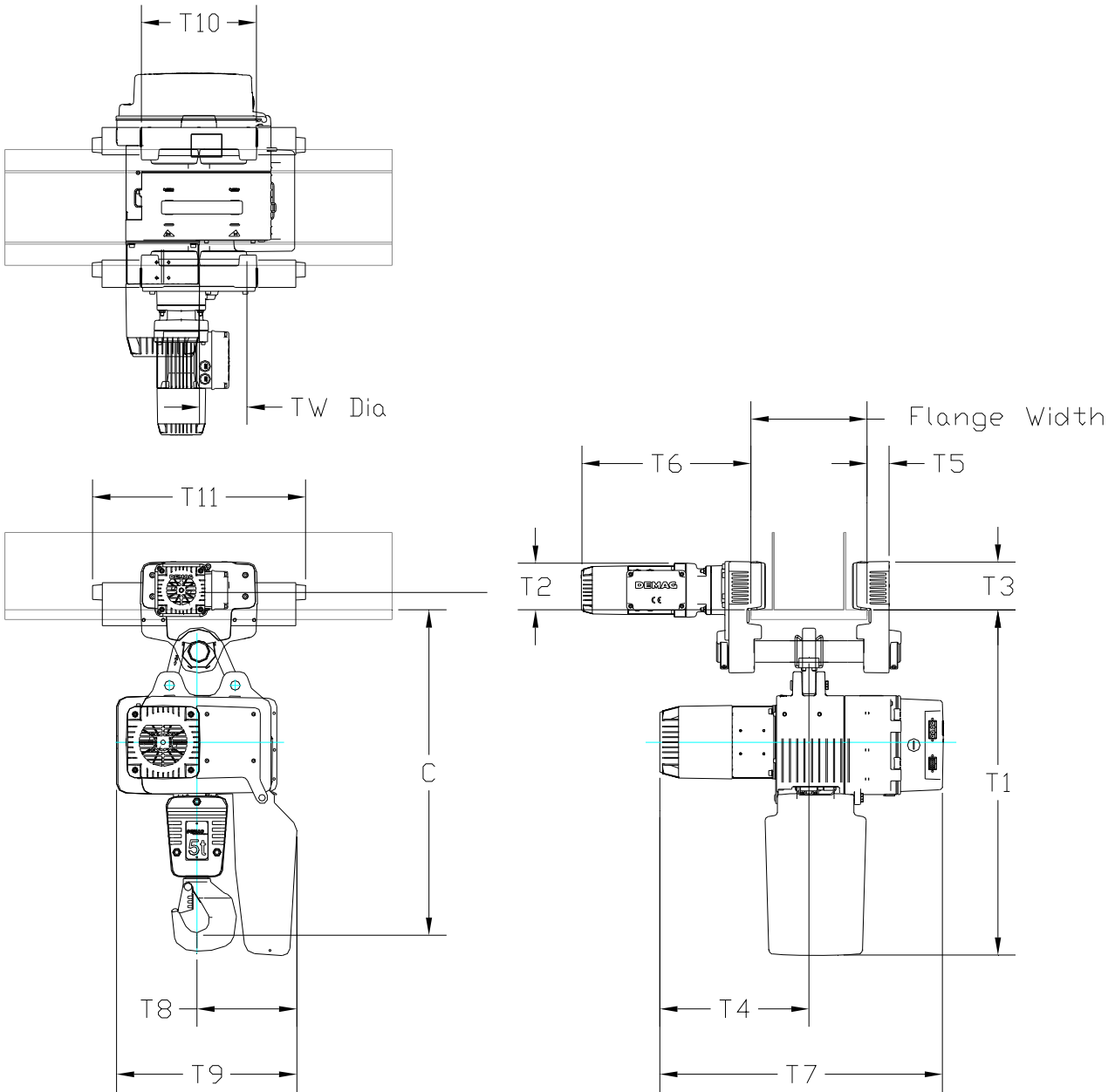
* NAMEPLATE & OPERATIONAL HP SHOWN, REFER TO PAGE 31 FOR MOTOR HP DETAILS.

5 M TON	HOIST DATA			TROLLEY DATA		
	HOIST TYPE	LIFT SPEED	LIFT ROPE DIA.	WHEEL DIA. WEIGHT	TROLLEY SPEED	MOTOR TYPE & HP
	MOTOR TYPE & HP					
	EKDRPro 5-5 4/1-10 Z-6/1 ZBR100D12/2 1.3/8.6 HP	24/4 FPM	32 FT 9mm	5" (125mm) 860 LBS	100 VFC FPM	ZBA71B4 0.5 & 0.9 HP*
	EKDRCom 5-5 4/1-10 Z-4.5/0.75 ZBR100D12/2 1.3/8.6 HP	18/3 FPM	32 FT 9mm	5" (125mm) 860 LBS	80/20 FPM	ZBF71A8/2 .14/.55 HP



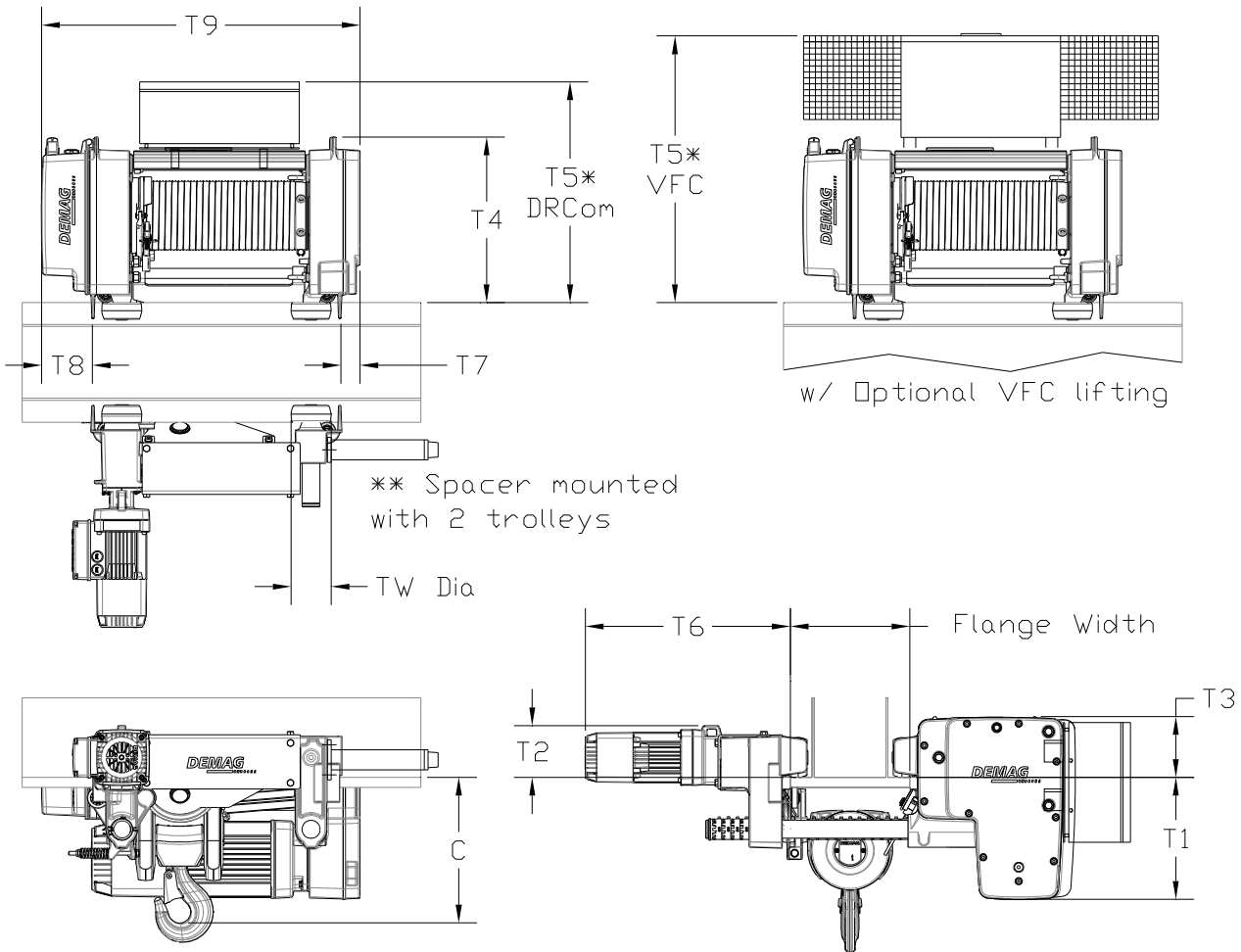
CAP. M Ton	EUDC HOIST MODEL	TR SIZE	TW Dia (in)	C (in)	T1 (in)	T2 (in)	T3 (in)	T4 (in)	T5 (in)	T6 (in)	T7 (in)	T8 (in)	T9 (in)	T10 (in)	T11* (in)
1	EUDCCom 10-1000 1/1 H5 V4.8/1.2	11	3.2	20.6	21.5	3.9	3.5	11.4	1.6	8.0	20.8	7.3	13.8	8.4	18.1
1	EUDCPro 10-1000 1/1 H5 V7.2/1.8	11	3.2	20.6	21.5	3.9	3.5	11.4	1.6	8.0	20.8	7.3	13.8	8.4	18.1
2	EUDCCom 10-2000 2/1 H5 V4.8/1.2	34	4.4	24.7	25.4	4.4	4.6	12.0	1.9	8.3	22.8	7.3	13.8	10.1	19.7
2	EUDCPro 10-2000 2/1 H5 V7.2/1.8	34	4.4	24.7	25.4	4.4	4.6	12.0	1.9	8.3	22.8	7.3	13.8	10.1	19.7
2	EUDCPro 25-2000 1/1 H5 V9.6/2.4	34	4.4	27.7	34.5	4.4	4.6	13.1	1.9	8.3	26.8	9.3	19.3	10.1	19.7
2.5	EUDCPro 25-2500 1/1 H5 V9.6/2.4	34	4.4	27.7	34.5	4.4	4.6	15.2	1.9	8.3	28.8	9.3	19.3	10.1	19.7
3.2	EUDCPro 16-3200 2/1 H5 V4.8/1.2	34	4.4	31.5	34.5	4.4	4.6	15.2	1.9	8.3	28.8	9.6	19.3	10.1	19.7

Note : * Trolley spacers when mounting 2 trolleys



CAP. M Ton	EUDC HOIST MODEL	TR SIZE	TW Dia (in)	C (in)	T1 (in)	T2 (in)	T3 (in)	T4 (in)	T5 (in)	T6 (in)	T7 (in)	T8 (in)	T9 (in)	T10 (in)	T11* (in)
4	EUDCPro 25-4000 2/1 H5 V4.8/1.2	56	4.9	33.5	35.2	4.8	5.0	15.2	2.1	17.1	28.8	9.6	19.3	11.9	21.7
5	EUDCPro 25-5000 2/1 H5 V4.8/1.2	56	4.9	33.5	35.2	4.8	5.0	15.2	2.1	17.1	28.8	9.6	19.3	11.9	21.7

Note : * Trolley spacers when mounting 2 trolleys



CAP. M Ton	EKDR Pro & Com HOIST MODEL	TW Dia (in)	T1 (in)	T2 (in)	T3 (in)	T4 (in)	T5* DRCOM	T5* VFC	T6 (in)	T7 (in)	T8 (in)	T9 (in)
2 & 3	DR3-3.2 4/1-10 Z	3.9	12.0	5.1	5.9	16.5	22.0	26.3	20.3	1.9	4.9	40.5
5	DR5-5 4/1-10 Z	4.9	15.0	5.9	6.5	18.9	24.5	29.0	20.3	2.7	4.7	42.2
8 & 10	DR10-10 4/1-10 Z	6.3	16.0	6.3	7.9	20.9	26.5	32.0	21.5	2.9	3.3	47.3
12.5	DR10-12.5 4/1-10 Z	6.3	16.0	6.3	7.9	20.9	26.5	32.0	21.5	2.9	3.3	47.3

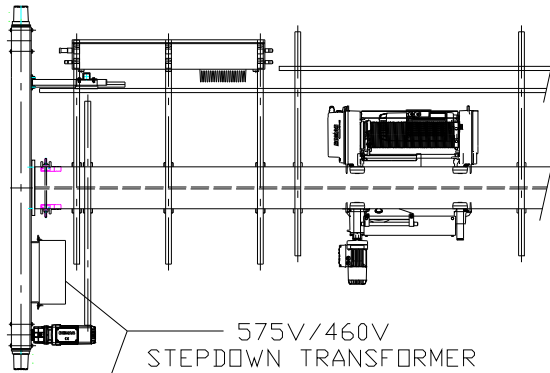
EKDR Pro & Com HOIST MODEL	C DIM - FOR FLANGE WIDTH UP TO:											
	7.87	8.66	9.45	10.24	11.02	11.81	12.6	13.39	14.17	14.96	15.75	16.54
DR3-3.2 4/1-10 Z	19.3	18.5	17.7	16.9	16.1	15.4	15.9	16.5	17.1	17.7	18.1	18.7
DR5-5 4/1-10 Z	21.3	20.5	19.7	18.9	18.1	17.3	18.3	19.3	20.3	21.3	22.2	23.2
DR10-10 4/1-10 Z				21.3	21.3	21.3	22.2	23.2	24.2	25.2	26.2	27.2
DR10-12.5 4/1-10 Z				21.3	21.3	21.3	22.2	23.2	24.2	25.2	26.2	27.2

Supersedes
 900 435 49 - 2/06

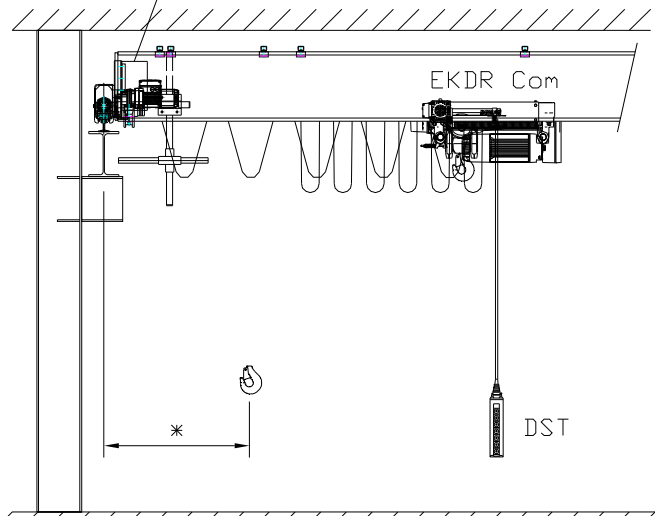
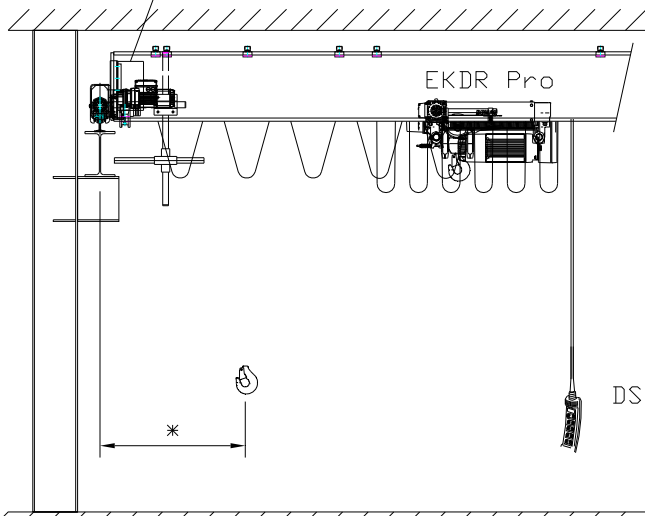
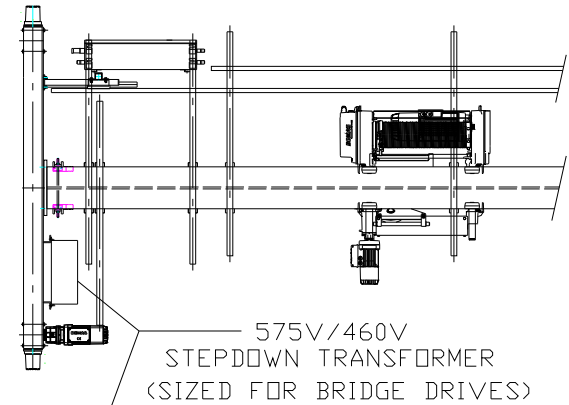
Crane Product Department

Classification No.
 714 IS 111

CRANES WITH EKDR PRO HOIST



CRANES WITH EKDR COM OR
 EUDC PRO OR EUDC COM HOISTS



* HOOK APPROACH DIMENSIONS (A1 LEFT HAND POWER) OR (A2 RIGHT HAND POWER) MAY INCREASE BY 6" FOR CERTAIN GIRDER, ENDTRUCK LENGTH, AND HOIST SIZE COMBINATIONS.

A 575V/460V STEPDOWN TRANSFORMER IS ALSO PROVIDED FOR THE TROLLEY MOTOR WITH EUDC PRO AND EUDC COM CHAIN HOISTS.

NAMEPLATE MOTOR DATA*

OPERATIONAL MOTOR DATA

DC Pro HOIST MOTOR TYPE	RATING VOLT/Hz	MOTOR DUTY	MOTOR HP	FULL LOAD		STARTING		RATING VOLT/Hz	MOTOR HP	FULL LOAD AMPS	STARTING AMPS
				PF	AMPS	PF	AMPS				
ZNK100A8/2	480/60	20/40%	.43/1.74	.53/080	1.95/3.2	.53/.80	3.3/10.3	480/60	.43/1.74	1.95/3.2	3.5/11.5
ZNK100B8/2	480/60	20/40%	.87/3.62	.57/.76	3.5/6.4	.57/.76	6.5/26.6	480/60	.87/3.62	3.5/6.4	6.5/26.6
ZNK100C8/2	480/60	20/40%	1.54/6.0	.54/.81	4.9/8.7	.54/.81	11.5/43.0	480/60	1.54/6.0	4.9/8.7	11.5/43.0
ZNK100A8/2	575/60	20/40%	.43/1.74	.58/.87	1.55/2.7	.58/.87	3.3/10.3	575/60	.43/1.74	1.55/2.7	3.3/10.3
ZNK100B8/2	575/60	20/40%	.87/3.62	.62/.83	2.7/4.5	.62/.83	5.0/18.8	575/60	.87/3.62	2.7/4.5	5.0/18.8
ZNK100C8/2	575/60	20/40%	1.54/6.0	.62/.89	3.7/6.9	.62/.89	8.7/34.2	575/60	1.54/6.0	3.7/6.9	8.7/34.2

DC Com HOIST MOTOR TYPE	RATING VOLT/Hz	MOTOR DUTY	MOTOR HP	FULL LOAD		STARTING		RATING VOLT/Hz	MOTOR HP	FULL LOAD AMPS	STARTING AMPS
				PF	AMPS	PF	AMPS				
ZNK100A8/2	480/60	20/40%	.31/1.21	.53/.80	1.95/3.2	.53/.80	3.3/10.3	480/60	.31/1.21	1.95/3.2	3.5/11.5
ZNK100B8/2	480/60	20/40%	.50/2.01	.57/.76	3.5/6.4	.57/.76	6.5/26.6	480/60	.87/3.62	3.5/6.4	6.5/26.6
ZNK100A8/2	575/60	20/40%	.31/1.21	.58/.87	1.55/2.7	.58/.87	3.3/10.3	575/60	.43/1.74	1.55/2.7	3.3/10.3
ZNK100B8/2	575/60	20/40%	.50/2.01	.62/.83	2.7/4.5	.62/.83	5.0/18.8	575/60	.87/3.62	2.7/4.5	5.0/18.8

DC TR MOTOR TYPE	RATING VOLT/Hz	MOTOR DUTY	MOTOR HP	FULL LOAD		STARTING**		RATING VOLT/Hz	MOTOR HP	FULL LOAD AMPS	STARTING** AMPS
				PF	AMPS	PF	AMPS				
MP 56 M	220-480V 60Hz	20/40%	.03/.13		.15/.55		.65/1.3	220-480V 60Hz	.03/.13	.15/.55	.65/1.3
MP 56 L		20/40%	.07/.27		.24/.9		.58/2.2		.07/.27	.24/.9	.58/2.2
MP 56 XL		20/40%	.05/.20		.24/.8		.58/1.9		.05/.20	.24/.8	.58/1.9
ZBF 71A8/2	480/60	40%	.14/.55	.60/.72	0.79/1.1	.82/.86	1.3/3.9	480/60	.14/.55	0.79/1.1	1.3/3.9
ZBF 71A8/2	575/60	40%	.14/.55	.60/.72	.63/.87	.82/.86	1.05/3.1	575/60	.14/.55	.63/.87	1.05/3.1

DC BRIDGE MOTOR TYPE	RATING VOLT/Hz	MOTOR DUTY	MOTOR HP	FULL LOAD		STARTING**		RATING VOLT/Hz	MOTOR HP	FULL LOAD AMPS	STARTING** AMPS
				PF	AMPS	PF	AMPS				
ZBF 71A8/2	480/60	40%	.14/.55	.60/.72	0.79/1.1	.82/.86	1.3/3.9	480/60	.14/.55	0.79/1.1	1.3/3.9
ZBF 80A8/2	480/60	40%	.21/.80	.63/.72	1.3/1.5	.90/.89	1.6/6.7	480/60	.21/.80	1.3/1.5	1.6/6.7
ZBF 90B8/2	480/60	40%	.32/1.3	.49/.78	1.6/2.5	.81/.79	3.1/8.9	480/60	.32/1.3	1.6/2.5	3.1/8.9
ZBF 71A8/2	575/60	40%	.14/.55	.60/.72	.63/.87	.82/.86	1.05/3.1	575/60	.14/.55	.63/.87	1.05/3.1
ZBF 80A8/2	575/60	40%	.21/.80	.63/.72	1.05/1.2	.90/.89	1.3/5.5	575/60	.21/.80	1.05/1.2	1.3/5.5
ZBF 90B8/2	575/60	40%	.32/1.3	.49/.78	1.25/2.0	.81/.79	2.5/7.1	575/60	.32/1.3	1.25/2.0	2.5/7.1
ZBA 71B4	220/50	100%	0.5	.53	2.6		3.9	87Hz***	0.9	2.6	3.9
ZBA 90A4	220/50	100%	1.5	.73	5.1		7.7	87Hz***	2.6	5.1	7.7

* Actual motor nameplate data may show equivalent KW rating or HP rating.

** Starting amperage for VFC trolley and bridge motors is based on 150% of full load amps.

*** Inverters are connected to 460V supply. Over 87Hz, motor operates with field weakening at constant HP.

FOR INFORMATION REGARDING **DEMAG DCL POWER RAIL** RUNWAY ELECTRIFICATION REFER TO THE DOCUMENTS BELOW.
TECHNICAL DATA - 229 158 49 PRICE LIST U.S.A. - 930 279 49 PRICE LIST CANADA - 930 279 50

Supersedes
900 435 49 - 2/06

Crane Product Department

Classification No.
714 IS 111

NAMEPLATE MOTOR DATA*								OPERATIONAL MOTOR DATA			
DR HOIST MOTOR TYPE	RATING VOLT/HZ	MOTOR DUTY	MOTOR HP	FULL LOAD		STARTING		RATING VOLT/HZ	MOTOR HP	FULL LOAD AMPS	STARTING AMPS
				PF	AMPS	PF	AMPS				
ZBR100C12/2	480/60	20/40%	0.9/5.5	.53/.78	4.6/8.5	.72/.88	7/40	480/60	0.9/5.5	4.6/8.5	7/40
ZBR100D12/2	480/60	20/40%	1.3/8.6	.54/.87	5.9/11.0	.75/.85	9/55	480/60	1.3/8.6	5.9/12.0	9/55
ZBR132D12/2	480/60	20/40%	2.3/14.3	.53/.88	10.0/17.8	.68/.85	17/120	480/60	2.3/14.3	10.0/17.8	17/120
ZBR100C12/2	575/60	20/40%	0.9/5.5	.53/.78	3.7/6.8	.72/.88	5.6/32	575/60	0.9/5.5	4.6/8.5	5.6/32
ZBR100D12/2	575/60	20/40%	1.3/8.6	.54/.87	4.7/8.8	.75/.85	9/55	575/60	1.3/8.6	5.9/12.0	9/55
ZBR132D12/2	575/60	20/40%	2.3/14.3	.53/.88	8.0/14.36	.68/.85	17/120	575/60	2.3/14.3	10.0/17.8	17/120
DRPro Trolley MOTOR TYPE	RATING VOLT/HZ	MOTOR DUTY	MOTOR HP	FULL LOAD		STARTING**		RATING VOLT/HZ	MOTOR HP	FULL LOAD AMPS	STARTING** AMPS
				PF	AMPS	PF	AMPS				
ZBA 71B4	220/50	60%	0.5	.53	2.6		3.9	120Hz***	0.9	2.6	3.9
DRCom Trolley MOTOR TYPE	RATING VOLT/HZ	MOTOR DUTY	MOTOR HP	FULL LOAD		STARTING**		RATING VOLT/HZ	MOTOR HP	FULL LOAD AMPS	STARTING** AMPS
				PF	AMPS	PF	AMPS				
ZBF 71A8/2	480/60	40%	.14/.55	.60/.72	0.79/1.1	.82/.86	1.3/3.9	480/60	.14/.55	0.79/1.1	1.3/3.9
ZBF 80A8/2	480/60	40%	.21/.80	.63/.72	1.3/1.5	.90/.89	1.6/6.7	480/60	.21/.80	1.3/1.5	1.6/6.7
ZBF 71A8/2	575/60	40%	.14/.55	.60/.72	.63/.87	.82/.86	1.05/3.1	575/60	.14/.55	.63/.87	1.05/3.1
ZBF 80A8/2	575/60	40%	.21/.80	.63/.72	1.05/1.2	.90/.89	1.3/5.5	575/60	.21/.80	1.05/1.2	1.3/5.5
DRPro Bridge MOTOR TYPE	RATING VOLT/HZ	MOTOR DUTY	MOTOR HP	FULL LOAD		STARTING**		RATING VOLT/HZ	MOTOR HP	FULL LOAD AMPS	STARTING** AMPS
				PF	AMPS	PF	AMPS				
ZBA 71B4	220/50	100%	0.5	.53	2.6		3.9	87Hz***	0.9	2.6	3.9
ZBA 90A4	220/50	100%	1.5	.73	5.1		7.7	87Hz***	2.6	5.1	7.7
DRCom Bridge MOTOR TYPE	RATING VOLT/HZ	MOTOR DUTY	MOTOR HP	FULL LOAD		STARTING**		RATING VOLT/HZ	MOTOR HP	FULL LOAD AMPS	STARTING** AMPS
				PF	AMPS	PF	AMPS				
ZBF 71A8/2	480/60	40%	.14/.55	.60/.72	0.79/1.1	.82/.86	1.3/3.9	480/60	.14/.55	0.79/1.1	1.3/3.9
ZBF 80A8/2	480/60	40%	.21/.80	.63/.72	1.3/1.5	.90/.89	1.6/6.7	480/60	.21/.80	1.3/1.5	1.6/6.7
ZBF 90B8/2	480/60	40%	.32/1.3	.49/.78	1.6/2.5	.81/.79	3.1/8.9	480/60	.32/1.3	1.6/2.5	3.1/8.9
ZBF 71A8/2	575/60	40%	.14/.55	.60/.72	.63/.87	.82/.86	1.05/3.1	575/60	.14/.55	.63/.87	1.05/3.1
ZBF 80A8/2	575/60	40%	.21/.80	.63/.72	1.05/1.2	.90/.89	1.3/5.5	575/60	.21/.80	1.05/1.2	1.3/5.5
ZBF 90B8/2	575/60	40%	.32/1.3	.49/.78	1.25/2.0	.81/.79	2.5/7.1	575/60	.32/1.3	1.25/2.0	2.5/7.1
ZBA 71B4	220/50	100%	0.5	.53	2.6		3.9	87Hz***	0.9	2.6	3.9
ZBA 90A4	220/50	100%	1.5	.73	5.1		7.7	87Hz***	2.6	5.1	7.7

* Actual motor nameplate data may show equivalent KW rating or HP rating.

** Starting amperage for VFC trolley and bridge motors is based on 150% of full load amps.

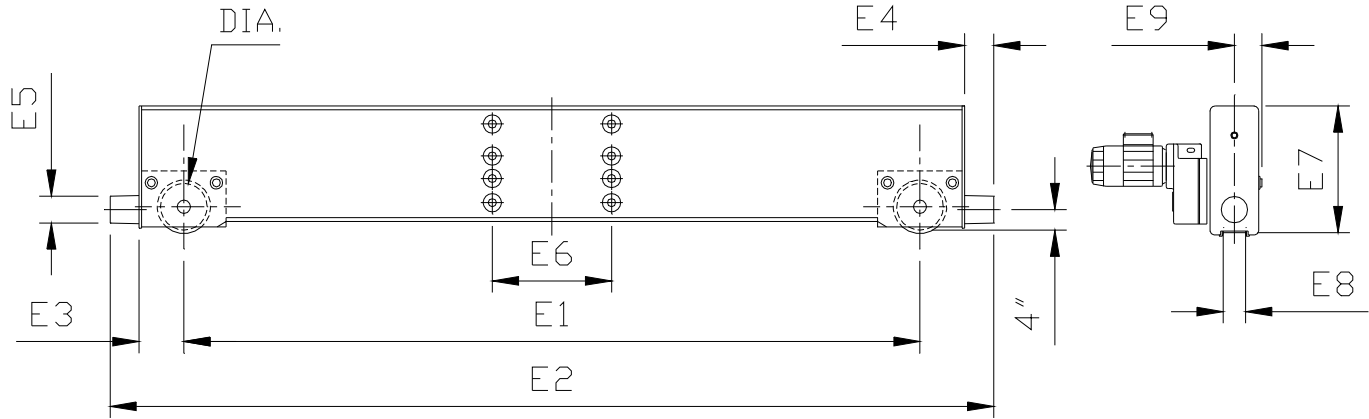
*** Inverters are connected to 460V supply. Over 87Hz, motor operates with field weakening at constant HP.

FOR INFORMATION REGARDING **DEMAG DCL POWER RAIL** RUNWAY ELECTRIFICATION REFER TO THE DOCUMENTS BELOW.
TECHNICAL DATA - 229 158 49 PRICE LIST U.S.A. - 930 279 49 PRICE LIST CANADA - 930 279 50

Supersedes
900 435 49 - 2/06

Crane Product Department

Classification No.
714 IS 111

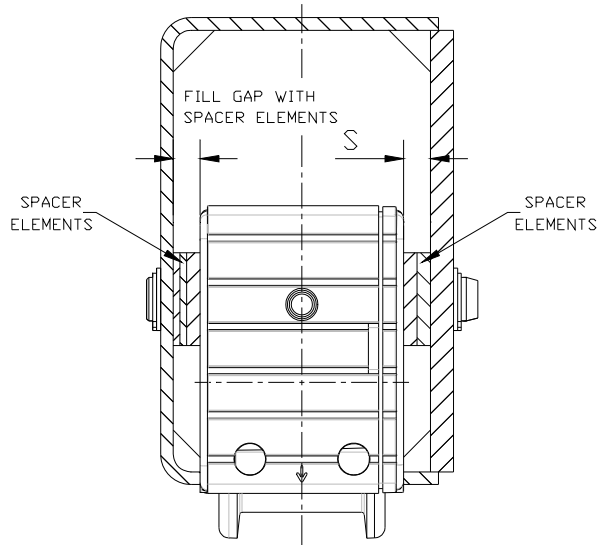


DFW-L-E ENDTRUCK	DIA. (in)	E1 (in)	E2 (in)	E3 (in)	E4 (in)	E5 (in)	E6 (in)	E7 (in)	E8 (in)	E9 (in)	BOLTS REQ'D	WEIGHT (lbs)
112/2000	4.4	78.7	95.1	4.0	4.0	4.0	11.0	9.6	2.36	2.8	4	250
112/2500	4.4	98.4	114.8	4.0	4.0	4.0	11.0	9.7	2.36	2.8	6	340
125/2000	4.9	78.7	95.9	4.4	4.0	4.0	11.0	11.1	2.36	3.1	6	340
125/2500	4.9	98.4	115.6	4.4	4.0	4.0	11.0	11.2	2.36	3.1	6	450
125/3150	4.9	124.0	141.2	4.4	4.0	4.0	11.0	11.4	2.36	3.1	6	600
160/2000	6.3	78.7	98.1	5.5	4.0	4.0	11.0	13.9	2.56	3.5	8	430
160/2500	6.3	98.4	117.8	5.5	4.0	4.0	11.0	14.1	2.56	3.5	8	570
160/3150	6.3	124.0	143.4	5.5	4.0	4.0	19.7	14.2	2.56	3.5	8	760
200/2000	7.9	78.7	101.9	6.8	5.0	5.0	11.0	17.2	2.95	4.2	8	660
200/2500	7.9	98.4	121.6	6.8	5.0	5.0	11.0	17.5	2.95	4.2	8	840
200/3150	7.9	124.0	147.2	6.8	5.0	5.0	19.7	17.5	2.95	4.2	8	1020
200/4000	7.9	157.5	180.6	6.8	5.0	5.0	19.7	17.5	2.95	4.2	8	1300

RUNWAY RAIL INFORMATION

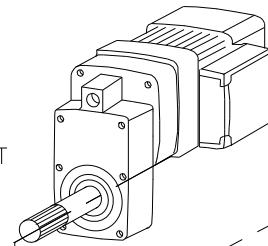
**REFER TO
WHEEL ADJUSTMENT LIMITS
ON THE NEXT PAGE**

ENDTRUCK DFW-L-E	WHEEL DIA.	WHL FLANGE OPENING	RAIL SIZE	RAIL HEAD WIDTH
112/2000	4.5"	2 3/8" (60 MM)	30# ASCE OR 40# ASCE	1 11/16"
112/2500	5"			OR 1 7/8"
125/2000		2 9/16" (65 MM)	40# ASCE OR 60# ASCE	
125/2500				2 15/16" (75 MM)
125/3150	6"	2 15/16" (75 MM)	40# ASCE OR 60# ASCE	
160/2000				8"
160/2500	8"	2 15/16" (75 MM)	40# ASCE OR 60# ASCE	
160/3150				8"
200/2000	8"	2 15/16" (75 MM)	40# ASCE OR 60# ASCE	
200/3150				8"
200/4000				

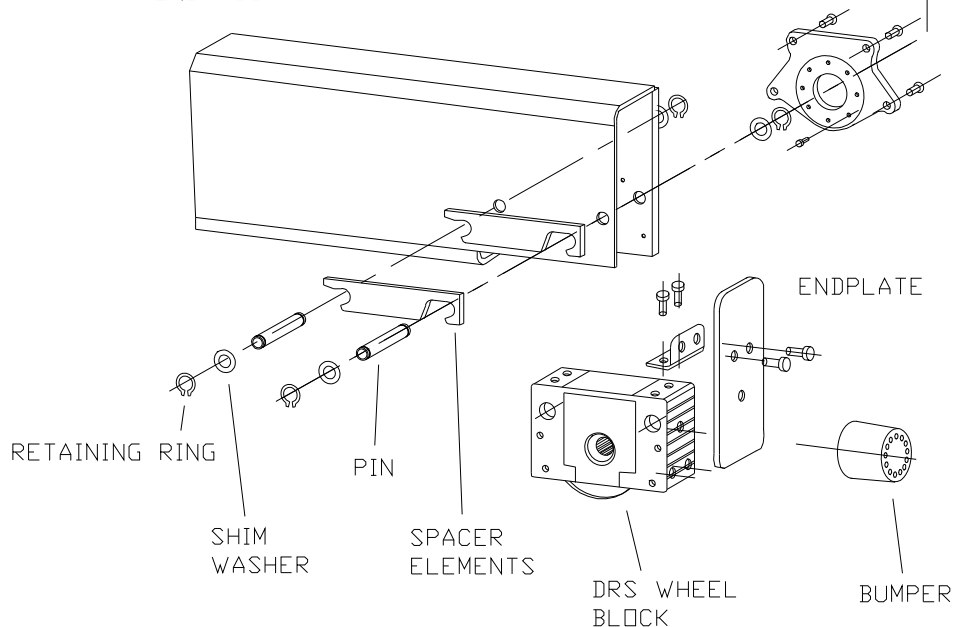


DFW-L-E WHEEL DIAMETER (mm)	STANDARD WHEEL SPACING S (mm)	MAXIMUM WHEEL ADJUSTMENT + / - (mm)
112	10	6
125	6	4
160	15	6
200	15	10

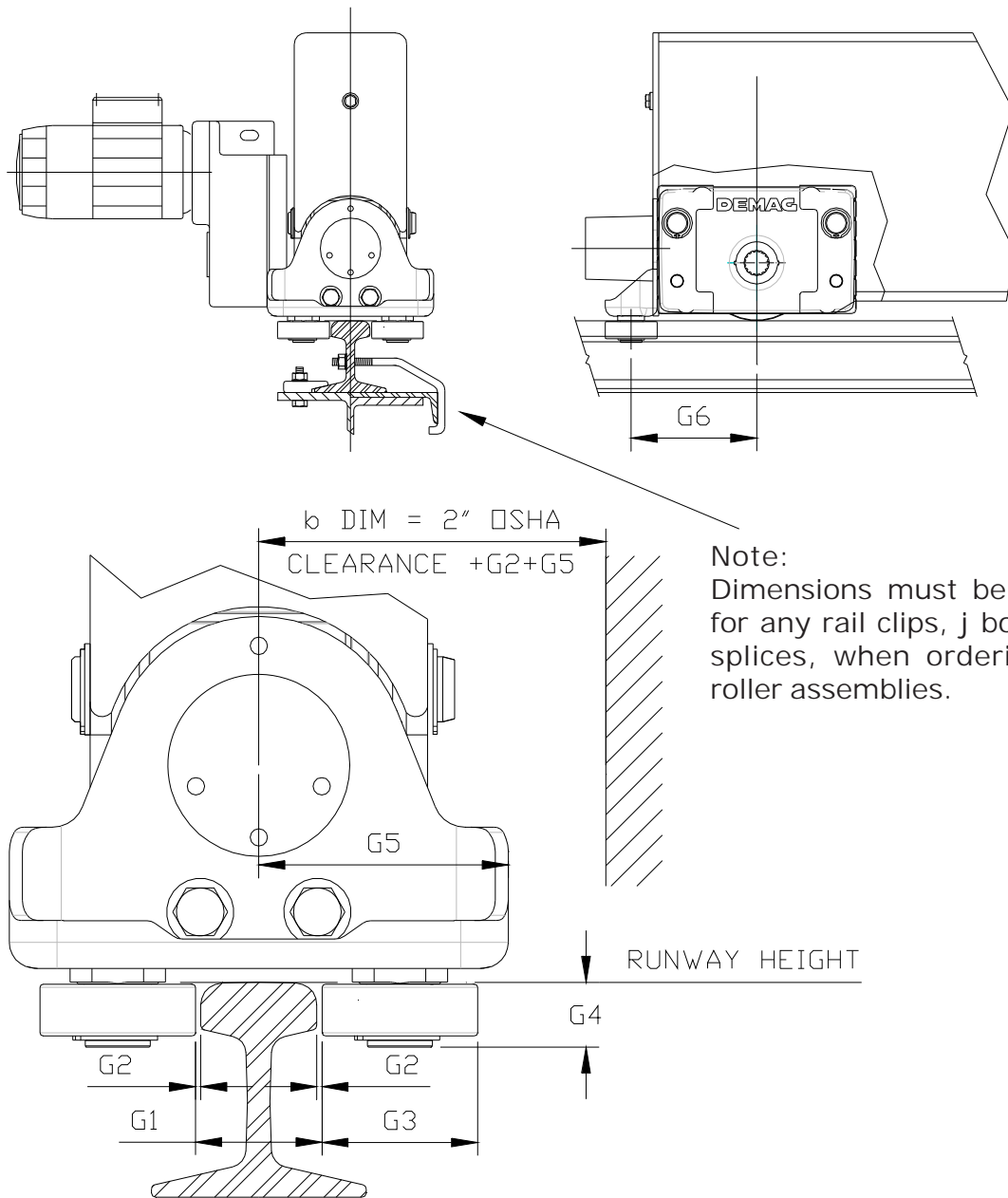
- DRIVE KIT:
- MOTOR
 - GEARBOX
 - TORQUE BRACKET



ENDTRUCK



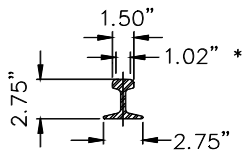
Endtruck Guide Rollers



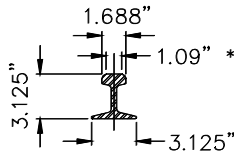
Note:
 Dimensions must be provided
 for any rail clips, j bolts or rail
 splices, when ordering guide
 roller assemblies.

DFW-L-E ENDTRUCK	G1 min (in)	G1 max (in)	G2 min (in)	G2 max (in)	G3 (in)	G4 (in)	G5 (in)	G6 (in)
112	1.18	2.75	.04	.19	2.05	.98	3.54	4.92
125	1.18	2.75	.04	.19	2.44	.98	3.78	5.51
160	1.18	3.15	.04	.19	2.83	1.22	4.53	6.83
200	1.57	3.54	.04	.19	3.15	1.30	4.92	8.27

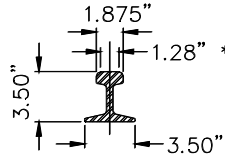
Toprunning Single Girder Cranes
 Crane Rail
 Dimensional & Technical data



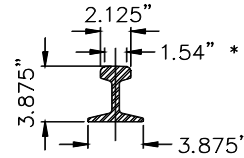
25# A.S.C.E.



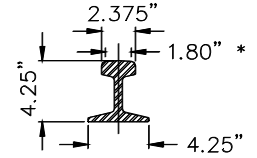
30# A.S.C.E.



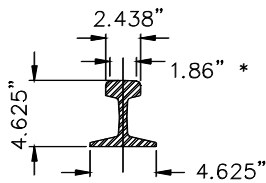
40# A.S.C.E.



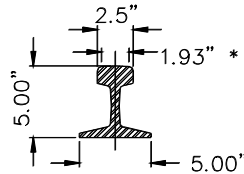
50# A.S.C.E.



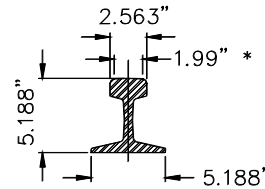
60# A.S.C.E.



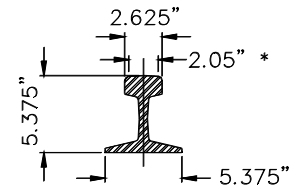
75# A.S.C.E.



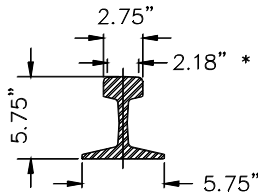
80# A.S.C.E.



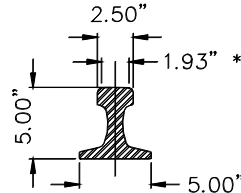
85# A.S.C.E.



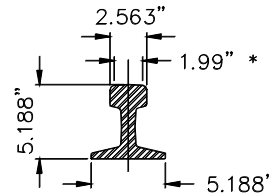
90# A.S.C.E.



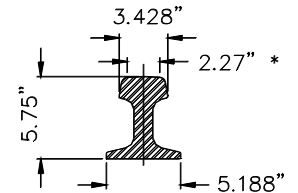
100# A.S.C.E.



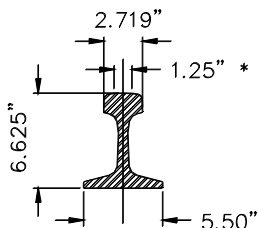
104#



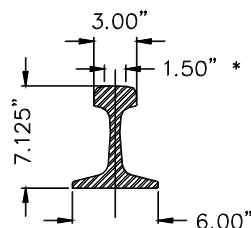
105#



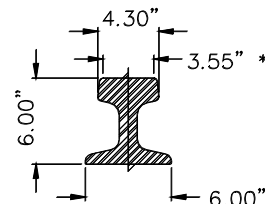
135#



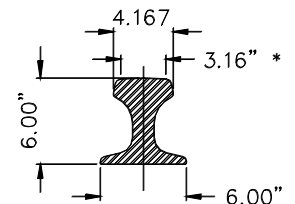
115# A.R.E.A.



132# A.R.E.A.



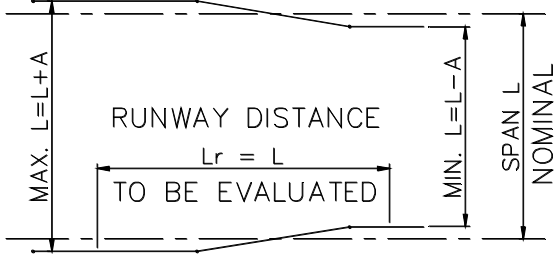
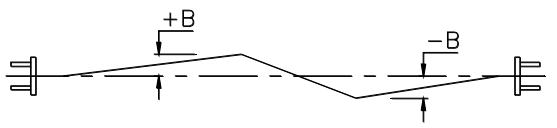
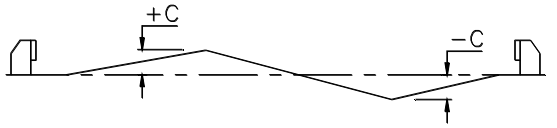
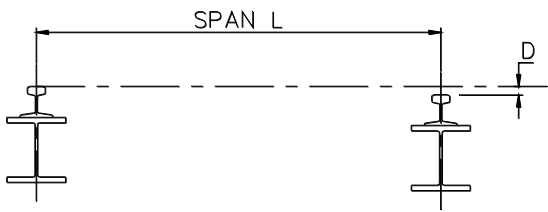
171#



175#

* EFFECTIVE RAIL WIDTH

Building runway tolerances per CMAA Specification 74

<p>RUNWAY SPAN</p>	 <p>MAX. $L=L+A$ MIN. $L=L-A$ RUNWAY DISTANCE $L_r = L$ TO BE EVALUATED SPAN L NOMINAL</p>	<p>$L < 50'$ $A = 3/16''$ $L > 50' < = 100'$ $A = 1/4''$ $L > 100'$ $A = 3/8''$ (1/4" PER 20'-0" MAX)</p>
<p>RUNWAY STRAIGHTNESS</p>	 <p>$+B$ $-B$</p>	<p>$B = 3/8''$ (1/4" PER 20'-0" MAX)</p>
<p>RUNWAY ELEVATION</p>	 <p>$+C$ $-C$</p>	<p>$C = 3/8''$ (1/4" PER 20'-0" MAX)</p>
<p>TRANSVERSE RAIL TO RAIL ELEVATION</p>	 <p>SPAN L D</p>	<p>$L < 50'$ $D = 3/16''$ $L > 50' < = 100'$ $D = 1/4''$ $L > 100'$ $D = 3/8''$ (1/4" PER 20'-0" MAX)</p>

RUNWAY RAILS MUST BE PROVIDED WITH PROPER RAIL SPLICES AND HOLD DOWN FASTENERS. RAIL SEPARATION AT JOINT SHOULD NOT EXCEED 1/16 INCH. FLOATING RAILS ARE NOT RECOMMENDED. THE CRANE RUNWAY MUST BE DESIGNED WITH SUFFICIENT STRENGTH AND RIGIDITY TO PREVENT DETRIMENTAL LATERAL OR VERTICAL DEFLECTION. THE LATERAL DEFLECTION SHOULD NOT EXCEED $L_r/400$ BASED ON 10% OF MAXIMUM WHEEL LOAD(S) WITHOUT IMPACT. THE VERTICAL DEFLECTION SHOULD NOT EXCEED $L_r/600$ BASED ON MAXIMUM WHEEL LOAD(S) WITHOUT IMPACT. GANTRY AND OTHER TYPES OF SPECIAL CRANES MAY REQUIRE ADDITIONAL CONSIDERATIONS.

NOTE: L_r = RUNWAY DISTANCE BEING EVALUATED EQUIVALENT TO CRANE SPAN.

Sales and Service Centers in North America

California

5435 Industrial Parkway • San Bernardino, California 92407
Telephone: (909) 880-8800 • Fax: (909) 880-4469

Georgia

254 Lake Ruby Drive • Suwanee, Georgia 30024
Telephone: (678) 546-0593 • Fax: (678) 482-7653

Illinois

11261 Kiley Drive • Huntley, Illinois 60142
Telephone: (847) 515-7030 • Fax: (847) 515-7040

Michigan

46545 Continental Drive • Chesterfield, Michigan 48047
Telephone: (586) 949-6035 • Fax: (586) 949-6038

Missouri

3375 Hwy 185 • Washington, Missouri 63090
Telephone: (636) 390-2495 • Fax: (636) 390-0366

South Carolina

BTC 560, Suite 150, 454 S. Anderson • Rock Hill, SC 29730
Telephone: (803) 909-9000 • Fax: (803) 909-9001

Ohio

29201 Aurora Road • Cleveland, Ohio 44139
Telephone: (440) 248-2400 • Fax: (440) 248-3874

Ontario

1155 North Service Road West • Oakville, Ontario L6M 3E3
Telephone: (905) 825-5900 • Fax: (905) 825-5901

Quebec

3524 Rue Ashby • St-Laurent, Quebec H4R 2C1
Telephone: (514) 336-5556 • Fax: (514) 336-4349

Texas

16430 Aldine-Westfield Road • Houston, Texas 77032
Telephone: (281) 443-7331 • Fax: (281) 443-7308

Washington

704 - 228th Avenue NE • Sammamish, Washington 98074
Telephone: (425) 883-4668 • Fax: (425) 883-4828

DEMAG Cranes & Components

29201 Aurora Road
Cleveland, Ohio 44139
Telephone: (440) 248-2400
Fax: (440) 248-3874
www.demag-us.com

DEMAG
Cranes & Components